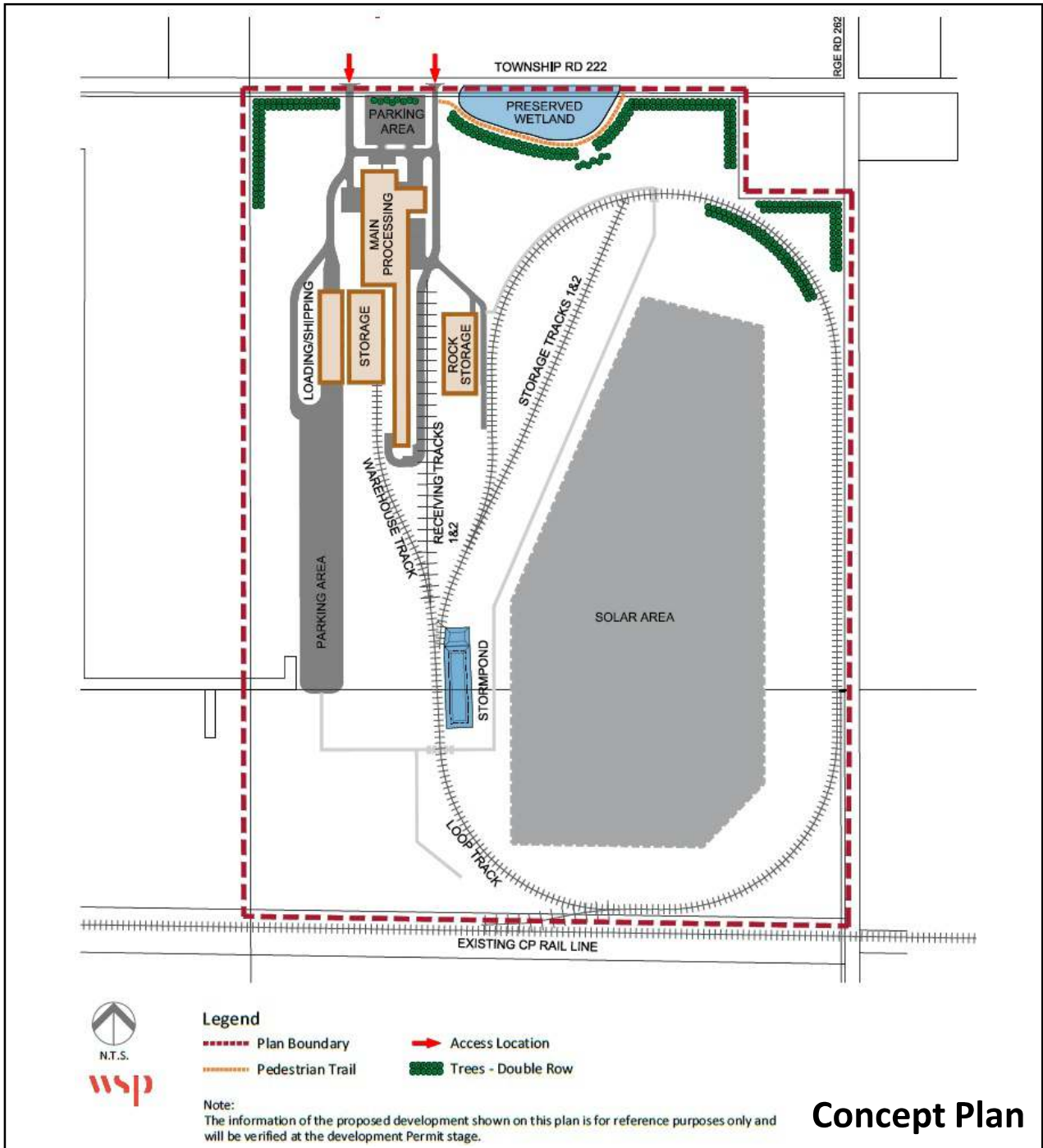


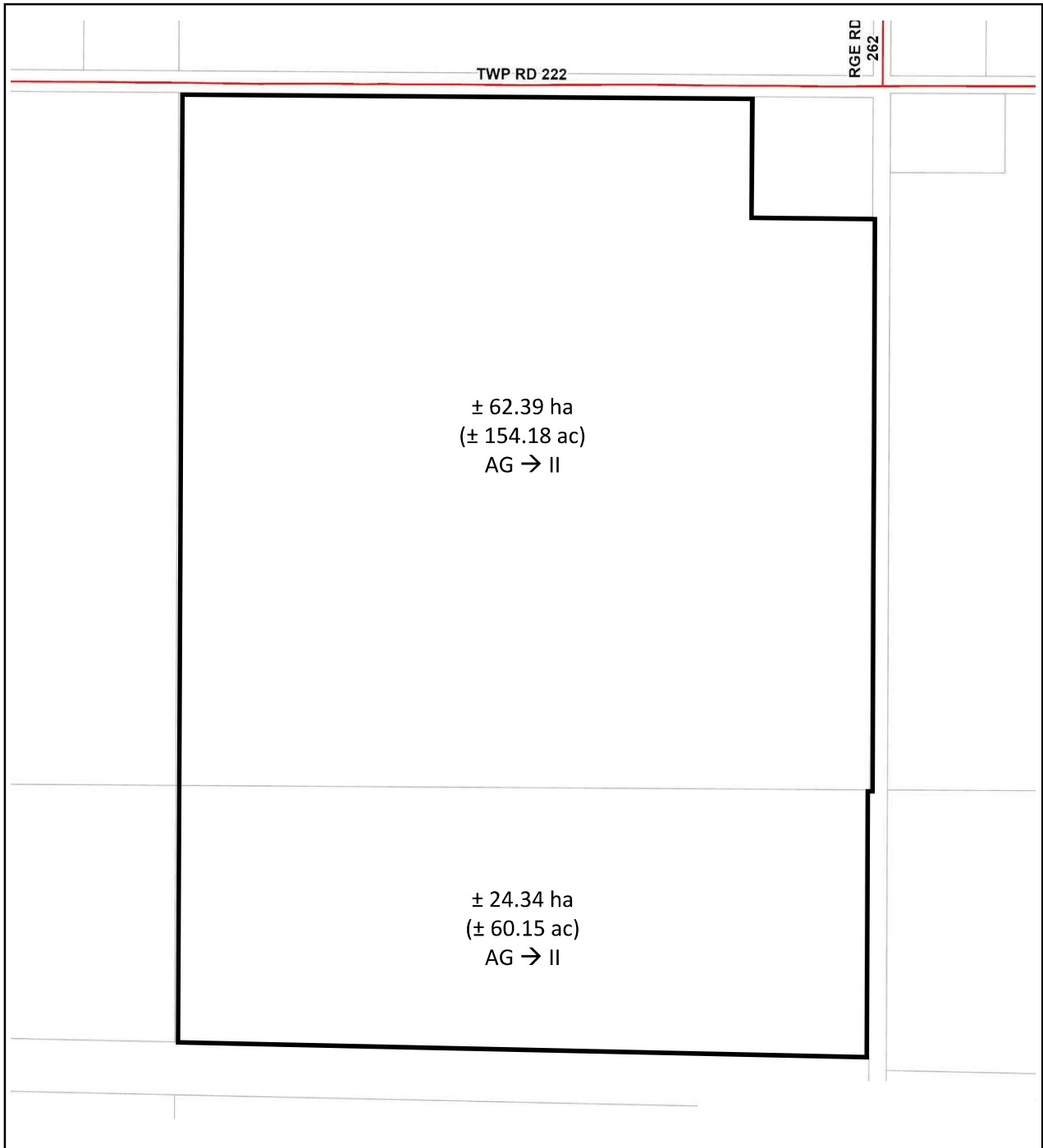
NE-10-22-26-W4M & a portion of SE-10-22-26-W4M





NE-10-22-26-W4M & a portion of SE-10-22-26-W4M





NE-10-22-26-W4M & a portion of SE-10-22-26-W4M





Note: Post processing of aerial photography may cause visual distortion.

Air Photo

NE-10-22-26-W4M & a portion of SE-10-22-26-W4M

