

Standard Celebrates

100!



 **WHEATLAND**  
COUNTY  
**CONNECTOR**

JULY 2022





1911-12

## Congratulations to the Village of Standard who is celebrating their centennial this summer!

It's a good time to look back into the history of the town, the area and the people who lived there! The landscape around the town was formed by the vast continental Wisconsin glacier which covered the land during the Pleistocene geologic era. This helped to form the present-day topography, soils and wildlife populations in the area.

Before Europeans settled here, this region was included in the traditional lands of the Blackfoot Nations, which included the Siksika people. The people who lived in the area were reliant on wildlife populations for hunting and river valleys for gathering supplies. In the summer of 1877, Treaty 7 was signed by Chief Crowfoot at the Blackfoot Crossing close to where the Crowfoot Creek (which originates near Standard) enters the Bow River.

17th century explorers, fur traders and missionaries were active in the Standard area (previously called Danaview and the Chimney Hills District), as was the North-West Company, the Hudson's Bay Company and the RCMP (who played a prominent role in developing the area). During this time members of the RCMP reported passing through buffalo herds of eight thousand in Southern Alberta.

In the 1880's work towards completing the Canadian Pacific Railway was underway and in 1909 lands were surveyed and opened up for homesteading in the Standard area. During this time most new immigrants got off the train at Gleichen and made their way north. The Canadian Pacific Railway set aside 21,000 acres for settlement and in 1910 the first families moved into Danaview/Chimney Hills District. The first store and post office was opened, and supplies and mail were initially delivered from Gleichen. Many



Standard area, 1910



Laying railway track, 1911



1923

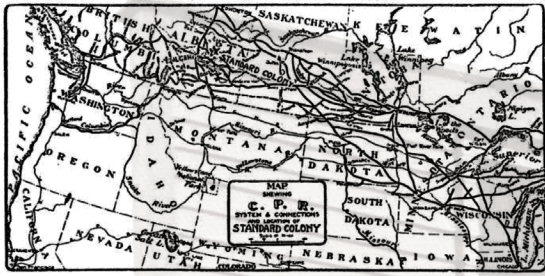


Coal Mine, 1912



1913





of the settlers from this area originated from Denmark bringing their farming expertise and customs, other nationalities included German, Scottish and American settlers. The first settlers faced many challenges including isolation and a harsh climate with cold winters.

In 1864 coal was discovered in the southeast corner of the village by the Hudson Bay Company, the first open pit mine was in operation by 1911 and employed many locals. It was a low grade and not as valuable as much other coal deposits in Alberta. The operation changed hands many times over the years and closed in 1952.

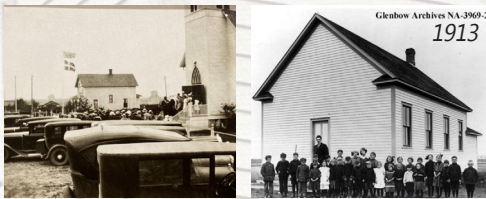
The rail line to Standard was completed in 1911 and by 1913 there was a daily passenger train, this significantly reduced the isolation of the community and increased the ability to bring in goods to the town and surrounding area. The rail line was decommissioned in 2011. The livery business was also an essential part of the early years as coal, lumber and supplies had to be transported from the train station. The merchants operating in town started with George Day, then J.P. Hansen, Nielsens and Madsen. The business was sold in 1974 to the Standard Co-op who donated the building, the store is now located at the Calgary Heritage Park where it still operates as a bakery. Atlas Lumber opened the Standard Lumber Yard in 1911, the first bank was established in 1912 and the National Grain Company built the first grain elevator in 1913. In 1921 the town received the first phone call and in the early 1920s the community transitioned from the horse to the car.

From the stories included in the 1979 town history book from Danaview to Standard, the pool hall was an important centre of the community where locals got into all sorts of trouble!

**Enjoy the celebrations on August 13th and cheers to the next 100 years!**



Last steam train in Standard, 1957



Glenbow Archives NA-3969-2  
1913

### J. P. HANSEN & COMPANY

GENERAL MERCHANTS

GROCERIES  
FRUIT AND  
CROCKERY

STANDARD  
ALBERTA

DRY GOODS  
MEN'S WEAR  
BOOTS & SHOES

Special Values for Friday, January 26 & Saturday, January 27/1940.

Oranges - Junkist - 150#s.....	Per Dozen	.39
Oranges - Junkist - 15#s.....	5 Dozen for	.39
Sweet Potatoes.....	3 Pounds for	.25
Onions - B. O. No. 1.....	8 Pounds for	.25
Celery - Utah Green.....	Per Pound	.10
Head Lettuce.....	Each	.10
Carrots - Dutch.....	Per Pound	.08
Parsnips - Jaxed.....	Per Pound	.08
Capefruit - Texas.....	5 for	.25

Also other Fruit and Vegetables at Lowest Prices.

Red Plum Jam - Pure -	Heavy Duty - No. 1 -
1 Pound Tins - Each .39	1 Pound Drums - Each .15
3 Kellogg's Cornflakes - All for	10 - 10 - 10 - 10 - 10 - 10 - 10 - 10 - 10 - 10
3 Fancy Socks - .25	3 Tins for - .25
Box Orifox -	Blue Ribbon Tea -
3 Pound Tins - Each \$1.19	1 Pound Package - Each .61



Danish settlers  
Glenbow Archives NA-3969-83



Glenbow Archives NA-3969-5



Glenbow Archives NA-3969-67  
1915



1926



Danish Lutheran Church, 1920's



1928



1912



1911





# August 13th Centennial Celebrations

*Everyone is invited to join in the celebrations!*

## Events Agenda (subject to change)

8:00am to 10:00am	Breakfast
8:30am	Fun Run/Walk around the Village – Tots, 3K & 5K
10:00am to 1:00pm	Church Display
10:00am	Threshing/plowing demonstrations (old school grounds)
10:00am to 4:00pm	Senior's Coffee Party
10:00am to 4:00pm	Old Time Country Fair (next to store)
10:00am to 4:00pm	Vintage vehicle/equipment displays on Main Street (Broadway)
11:30 to 2:00pm	Memory Lane Display <ul style="list-style-type: none"> <li>• Hot Dog Lunch</li> <li>• Scavenger Hunt</li> </ul>
2:00pm to 3:00pm	Library Tours
2:30pm to 3:30pm	Horseback Riding Demonstration (Rodeo Arena at the campground)
12:00pm to 2:00pm	Various local vendors will be open for lunch <ul style="list-style-type: none"> <li>• Christensen Clover Farms</li> <li>• Tracey's Concession (Arena)</li> </ul>
7:00pm	Youth & Children's Activities <ul style="list-style-type: none"> <li>• Bouncy houses, balloons and face painting</li> <li>• Movie at Hall</li> </ul>
5:00pm to 6:30pm	Roast Beef Dinner, catered by Irricana Lions (Arena)
4:00 pm - 5:00pm to 7:00 pm 8:00pm to 12:00 am	Entertainment tent (next to the Sport Courts) <ul style="list-style-type: none"> <li>• Cash Bar &amp; DJ music</li> <li>• Natalie Johnstone - Master of Ceremonies</li> <li>• Aaron Krabsen</li> <li>• Drew Gregory</li> </ul>
Sunday August 14th: Special Church Service with Danish Lunch 10:30am	

### Order your Dinner Tickets now!

Adults \$25  
6-12 \$10  
under 5 - free

[Http://villageofstandard.eventbrite.ca](http://villageofstandard.eventbrite.ca)

*\* tickets only sold in advance, limited tickets are available*

### Volunteers needed

Please contact:  
Jennifer Sommerfeldt  
PH: 403-644-2905

### Donations

The event organizers gratefully accept donations for this special day! Donate at the registration link above or mail cheques to "Village of Standard", Box 249, Standard, AB, T0J 3G0, note in memo "Centennial".

Photo Credit:  
[www.youtube.com/watch?v=2yA3QDQZoFk](http://www.youtube.com/watch?v=2yA3QDQZoFk)





# GOOD FOOD BOX

## Fresh Produce at a fraction of the Cost!

The Good Food Box program was established to encourage healthy eating while making it affordable for individuals and families alike. The program has been in our area since the fall of 2014 and offers fresh fruits and vegetables to its clients.

The program is available to anyone who is interested in taking part; no restrictions to numbers of boxes purchased or eligibility of participants.



### Boxes can be purchased in three different sizes:

SMALL which offers 25-30 pounds of food= \$27  
MEDIUM which offers 35-40 pounds of food= \$32  
LARGE which offers 45-50 pounds of food= \$37

*\*There is a \$2 handling/shipping fee which is also added to the initial cost.*

Each box contains the basic produce staples: potatoes, carrots, onions, apples and oranges with additional seasonal fruits and vegetables rounding out the weight.

The program is made possible because the Community Kitchens Program of Calgary (with whom we partner) bypasses the retailers and goes directly to importers and produce handlers in the province.

For additional information or to order your box, please call Wheatland FCSS at  
Ph: 403-934-5335  
or email: [info@wfcss.org](mailto:info@wfcss.org)

Participants pre-order, pay and pick up their boxes at Wheatland FCSS, Wheatland Administrative Office at the corner of Range Road 243 and Highway 1.

### Upcoming 2022 order and delivery dates:

#### Order before 3:00 PM on:

July 12

Summer Break

September 20

October 18

November 22

#### Pickup by 4:00PM on:

July 22

September 30

October 28

December 2

Note: payment must be received two days prior to delivery date.

Payment options: cash or cheque upon pick up  
e-transfer to [info@wfcss.org](mailto:info@wfcss.org)  
Password: goodfoodbox (all one word, lower case)







# VOYENT ALERT!

## Register Today!

<https://ca.voyent-alert.com/vras/client.html#!/registration>

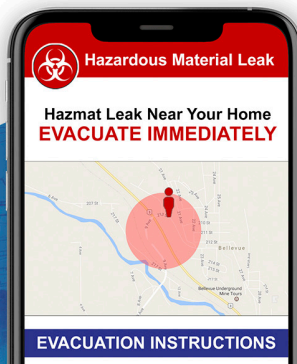
Wheatland County uses the Voyent Alert! Notification Service to keep you informed during emergencies as well as day-to-day notifications. Register now to receive important notifications about Wheatland county that matter to you! The service is FREE, easy to use and anonymous.

Choose how you want to stay informed. Receive emergency alerts or day-to-day notifications from Wheatland County via Voyent Alert! mobile app, text/SMS, email or voice calling to a landline. To ensure you are being reached during a crisis, we recommend registering for at least two of the channels.

Smart alerting capabilities ensure that you will only get notified when a communication from Wheatland County is relevant to you or one of the locations you are following.



## REGISTER NOW!



## Driveway Etiquette

*4 metres x 4 metres is the standard!*

### Ensure emergency access to your property

Driveways require a minimum of four metres (12 feet) vertical clearance and a minimum of four metres (12 feet) width to provide safety access for firefighting and other emergency vehicles.

Any driveway longer than 90 metres (300) feet should have a turn-out space to allow fire trucks or other firefighting equipment to pass or to turn around.

Do not block your access route with gates, archways or other things that will impede the entrance of emergency vehicles.

Park your vehicles off to the side and keep clutter from blocking the driveway.

If you have a dugout or other water source like a lake or river, ensure that there is access to allow trucks to fill with water.





# Wheatland MEALS ON WHEELS Frozen Program

Wheatland FCSS has partnered with Calgary Meals on Wheels Frozen Program to provide Wheatland County residents with nutritious and affordable meals. The program is available to anyone in Wheatland County regardless of age, finances or status.

All items are prepared by a Blue Ribbon chef in the most up-to-date facility for safe food production. Recipes are reviewed by a registered dietitian prior to production to ensure meals are balanced and meet dietary standards.

Frozen meal orders are placed bi-weekly. The following week orders are retrieved, sorted and stored at our office until delivery or pick up arrangements have been made.

The menu is extensive and offers a variety of entrees, soups and baked goods for individuals and families. Renal and gluten-free options are also available and we would be glad to give further information should you be interested.

Cost varies by product. Payment is by cheque or cash and is due on pick-up/delivery day.

For more information or to place an order contact Wheatland FCSS at 403-934-5335. Order forms can be found in this pamphlet and on our website.

## Order/Pick up Schedule 2022

### ORDER

### PICK UP

MAY 2  
MAY 16  
MAY 30  
JUNE 13  
JUNE 27  
JULY 11  
JULY 25  
AUGUST 8  
AUGUST 22  
**SEPTEMBER 2**  
SEPTEMBER 19  
OCTOBER 3  
OCTOBER 17  
OCTOBER 31  
NOVEMBER 14  
NOVEMBER 28  
DECEMBER 5

MAY 10  
MAY 24  
JUNE 7  
JUNE 21  
JULY 5  
JULY 19  
AUGUST 2  
AUGUST 16  
AUGUST 30  
SEPTEMBER 13  
SEPTEMBER 27  
OCTOBER 11  
OCTOBER 25  
NOVEMBER 8  
NOVEMBER 22  
DECEMBER 6  
DECEMBER 13

\* Please note that those dates highlighted are alternate order days due to statutory holidays. Please have your order in by 3PM.

**We look forward to hearing from you!**

PH: 403-934-5335

[www.wfcss.org](http://www.wfcss.org)





# Saying Goodbye to Lynn Walker

*March 31, 1951 – May 12, 2022*

Lynn was born in Calgary to Abe & Lidie Walker. Shortly after her birth, Lynn's mother Lidie passed away. Lynn went to live with her Auntie Marion and Uncle Pete Westerson and was raised with their family in Calgary. She graduated from High School in Calgary 1969 and continued on studying to graduate as a Lab Technician.

Lynn raised her children (Taya and Travis) in Calgary but moved to Strathmore in 2000. This move brought her to a smaller community and closer to the Walker relatives. She has always been an active member of the churches she attended and served others in the community around her. She worked in various healthcare roles during her career before she transitioned to Family Community Support Services (FCSS) in 2011. Lynn's creativity, leadership and compassion allowed Wheatland FCSS to maintain the level of client care the community needed. She knew what programs would have a lasting and meaningful impact.

Lynn can be described as a life-long learner and artist. She took many courses on a variety of topics and developed her skills in numerous art forms – photography, quilting, painting etc. She had an incredible green thumb – any houseplant in her care thrived! And “WOW” she was a fantastic cook!

Since 2016 Lynn has had various health issues. She was courageous and maintained a positive “what can I learn from this” attitude. She continued to live a life of adventure, traveling outside Canada when she could and enjoying new experiences right here in Alberta. Her life was lived with purpose and intention, much joy and laughter. Her wisdom, analytical mind and sincere friendship will be missed. She was an inspiration to many.

Lynn will be lovingly remembered and deeply missed by her family, close friends and work colleagues. Her beloved dog, Shamus will miss her cuddles and companionship dearly.





# WHAT DO YOU NEED HELP WITH?

Whether you're just starting out, trying to expand your business, or looking for some guidance on how to sell your company, Community Futures is here for you every step of the way.



## Starting a Business

Let our team of experienced advisors help you get started.



## Growing a Business

Our team is here to ensure you have the resources & financing you need to succeed.



## Buying a Business

We can help with business planning, strategy, or securing financing.



## Digital Economy Program

The Digital Economy Program (DEP) is designed to help entrepreneurs take their businesses online. Our Digital Service Squads will guide businesses through:

- digital transformation and/or
- launching and managing their online stores.

Small business can apply to participate in one or both programs, free of charge.



## Get one-on-one support with our experienced local business specialists

## OUR SERVICES

1. Small business support and guidance.
2. Flexible financial support to start and grow your business.
3. Small business skills and training for rural entrepreneurs.

## Building our region, One Idea at a Time

Whether you need help writing your business plan, securing financing, or exploring your online marketing opportunities, our business specialists can help.

We've been helping small business owners in the Wild Rose region for over 30 years. We're business owners too - and we know what it takes - so call and book an appointment today!



## ABOUT US

Staffed by seasoned business professionals, and guided by a volunteer Board of Directors, we're more than just a business lender.

With over 30 years of experience helping rural entrepreneurs grow and thrive as small business owners, we understand where you are now, and where you want to go in the future.



Ready for the next steps? Let's chat.

**Phone**  
403.934.8888

**Website**  
[www.wildrose.albertacf.com](http://www.wildrose.albertacf.com)

**Email**  
[wildroseinfo@albertacf.com](mailto:wildroseinfo@albertacf.com)

**Office**  
101, 331 3rd Ave.  
Strathmore, Alberta

**Community Futures** Wild Rose

[www.wildrose.albertacf.com](http://www.wildrose.albertacf.com)



Prairies Economic  
Development Canada

Développement économique  
Canada pour les Prairies



# FIRE SAFETY



**Emergency Preparedness  
Be Ready for Anything!**

## Fire Permits

A fire which is contained in an incinerator, barbecue or residential fire pit does not require a Fire Permit under **Bylaw 2019-06**. In Wheatland County a fire permit is required for any other type of controlled fire. There is no charge for a fire or fireworks permit. If conditions are breached or the weather deteriorates, permits may be canceled at any time. Upon suspension or cancellation of any notification; which will include immediately extinguishing any fire set according to their permit.

Our Fire Bans are applicable to only our County. Other jurisdictions and Provincial Parks will have their own regulations. Refer to [albertafirebans.ca](http://albertafirebans.ca)

Fire Permit applications can be found on the County website [www.wheatlandcounty.ca/firepermits](http://www.wheatlandcounty.ca/firepermits) or email [fireservices@wheatlandcounty.ca](mailto:fireservices@wheatlandcounty.ca) for more information.

## Sky Lanterns & Fire Crackers

Wheatland County Fire Services would like to remind residents that:

- Fire Crackers and Flying Lanterns (also known as a sky lantern) are prohibited in Alberta. If you see them being used, call 911 and report it to the Fire Department immediately.
- Fireworks are regulated under Section 5.7 of the National Fire Code – Alberta Edition and a permit is required to launch fireworks.

## Smoke Alarms

Smoke alarms are a key part of a home fire escape plan. When there is a fire, smoke spreads fast. Working smoke alarms give you early warning so you can get outside quickly.

### Safety Tips

- Install smoke alarms in every bedroom. They should also be outside each sleeping area and on every level of the home. Install alarms in the basement.
- Large homes may need extra smoke alarms.
- It is best to use interconnected smoke alarms. When one smoke alarm sounds, they all sound.
- Test all smoke alarms at least once a month. Press the test button to be sure the alarm is working.
- Current alarms on the market employ different types of technology including multi-sensing, which could include smoke and carbon monoxide combined.
- Today's smoke alarms will be more technologically advanced to respond to a multitude of fire conditions, yet mitigate false alarms.
- A smoke alarm should be on the ceiling or high on a wall. Keep smoke alarms away from the kitchen to reduce false alarms. They should be at least 10 feet (3 meters) from the stove.
- People who are hard-of-hearing or deaf can use special alarms. These alarms have strobe lights and bed shakers.
- Replace all smoke alarms when they are 10 years old.





# Agriculture & Environment Department

## ASB Bursary *now accepting applications*

The Wheatland County Agricultural Service Board (ASB) invites students furthering their studies in an agriculture or environmental science related field to apply for an ASB Bursary. The ASB will provide up to \$6000 in bursaries annually with a minimum award of \$500 and a maximum award of \$1500 depending upon the number of applicants that meet the criteria. Application deadline: August 31st.

Application packages are available from the Wheatland County Administration Office or on the Wheatland County website [www.wheatlandcounty.ca](http://www.wheatlandcounty.ca)

**For additional information contact Michelle Van Haarlem**  
**Ph: 403-361-2000 Email: [agandenv@wheatlandcounty.ca](mailto:agandenv@wheatlandcounty.ca)**

## 2022 Roadside Mowing & Weed Spraying Schedule

County staff will begin mowing vegetation and spot spraying weeds of all municipal roadsides in mid-June. Weeds will be sprayed with Clearview herbicide (PCP #29752). The following schedule gives you an approximate date of when the mower/sprayers will be in your Grader Division (GD).

Grader Division	Start Date	Completion Date
<b>North West Rotation</b>		
GD 2	Mid June	Late June
GD 5	Early July	Mid July
GD 4	Mid July	Late July
GD 1	Early August	Mid August
<b>East Rotation</b>		
GD 6	Mid June	Late June
GD 3	Early July	Mid July
GD 10	Mid July	Early August
<b>South Rotation</b>		
GD 9	Mid June	Late June
GD 8	Early July	Mid July
GD 7	Mid July	Early August



# Wheatland County WEEDUCATION YELLOW Clematis

*Clematis tangutica*

## Alberta Weed Act Designation Noxious

Noxious Weeds have the ability to spread rapidly, cause severe crop losses and economic hardship. These weeds must be controlled to prevent further establishment and spread. It is a landowners duty to control this plant if it occurs on their property

Yellow clematis is tolerant of cold, drought and nutrient poor soil conditions but prefers full sun in woodlands, grassy areas, rail yards and industrial sites. Prevention is always the best control – never purchase or grow yellow clematis. Buyer beware, this plant may available as an ornamental plant for purchase. Repeated hand-pulling and proper disposal prior to flowering can be effective.

### Similar Species

Invasive: None as it is easily distinguished from other invasive plants

Native: Blue clematis or blue Virgin's bower (*Clematis occidentalis*), white clematis or white Virgin's bower (*Clematis ligusticifolia*)

#### 1. Leaf

Compound leaves with 5-7 lance-shaped leaflets, 5-6 cm long; edges coarsely toothed and tips pointed, undersides slightly hairy.

#### 2. Mature Plant/ Infestation

Several branching stems up to 3-4 m long; young stems are pliable, older stems become woody.

#### 3. Flower

Lemon yellow, nodding flowers with four long petals are bell-shaped; born either singly or in small groups of 2-3 on a short peduncle.

#### 4. Seed head

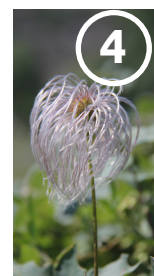
Seed heads or 'puffballs' are clusters of oval seeds with long silky tails.

#### Root

Long taproot



For more information  
Visit [www.abinvasives.ca](http://www.abinvasives.ca)



Contact George Bloom, Agricultural Services Officer for information about invasive species management in Wheatland County at Ph: 403-934-4949 or [George.Bloom@wheatlandcounty.ca](mailto:George.Bloom@wheatlandcounty.ca)



# SOIL HEALTH

FOOTHILLS FORAGE  
AND GRAZING ASSOCIATION

# FIELD TOURS



**FEATURING ODETTE MENARD**

**Odette Menard is an agricultural engineer who has had a major role in the promotion of soil conservation.**

**Odette is an expert in earthworm behaviour and practices that promote health & fertility.**



## PINCHER CREEK

July 11, 2022

### Topics Include:

- Grazing plan-long term
- Building soil health over time
- System approach to grazing management
- Cost effective strategies
- Stockpiled forage & bale grazing

**Speakers:** Julia Palmer, Uriel Delgado & Odette Menard



## STRATHMORE

July 12, 2022

### Topics Include:

- Enhancing your grazing options
- Adding to the land's natural value
- Reclaiming land for production
- Cover crop silage mix under irrigation
- Soil health

**Speakers:** Rod Vergouwen, Graydon Garner and Odette Menard



## MADDEN

July 14, 2022

### Topics Include:

- Research & technology used on Olds College demo sites
- Soil amendments in perennial & annual stands
- Virtual fencing collars
- Grazing & riparian health
- Advanced Ag & soil carbon

**Speakers:** Sean Thompson, Laio Silva Sobrinho, Graeme Finn & Odette Menard

Registration & details visit: <https://www.foothillsforage.com/events>

### COSTS

FPGA Member / \$25.00 + GST  
Non-Member / \$30.00 + GST







# Rosebud Theatre & School of the Arts

## Summer 2022 Events

### Rosebud Chamber Music Festival

[www.rosebudchambermusic.com](http://www.rosebudchambermusic.com)

#### Strathmore United Church

136 2nd Ave, Strathmore  
Friday, July 8, 2022 - 7:30PM to 9:30PM  
Featuring The Rosebud String Quartet and pianist Philip Chiu  
Sponsored by The Vault Cultural Collective

#### The Akokiniskway Gallery

348 Martin Ave, Rosebud  
Saturday, July 9, 2022 - 10:00 PM to 11:30 PM  
Featuring "Transfigured Night" performed by the Rosebud String Quartet

#### The Rosebud Church

404 Martin Ave, Rosebud  
Sunday, July 10, 2022 - 7:30 PM to 9:30 PM  
Featuring the Rosebud String Quartet and pianist Philip Chiu.

### Rosebud Theatre

[www.rosebudtheatre.com](http://www.rosebudtheatre.com)

#### Every Brilliant Thing

by Duncan Macmillan and Jonny Donahoe  
Summer Studio Stage, Rosebud Theatre  
July 8 - August 28, 2022

You're seven years old. Mum's in hospital. She finds it hard to be happy. You start making a list of everything worth living for. You leave it on her pillow. You know she's read it because she's corrected your spelling. Twenty years and thousands of things later, the list will take on a life of its own.

*"One of the funniest plays you'll ever see about depression - and possibly one of the funniest plays you'll ever see..." - The Guardian (UK), "finds a perfect balance between conveying the struggles of life, and celebrating all that is sweet in it" - The Independent (London), "gloriously funny and exceptionally warm. ... highlights the irrepressible resilience of the human spirit and the capacity to find delight in the everyday." - Time Out (London).*

#### Songs for a New World

by Jason Robert Brown  
Summer Opera House Musical, Rosebud Theatre  
June 10 - August 28, 2022

A soaring theatrical song cycle about a series of moments in the lives of a startling array of characters who not only survive but thrive in the face of adversity. "Hear my song: It'll help you believe in tomorrow. Hear my song: It'll show you the way you can."

*"The music in this show is like a healing salve." (Rosebud Patron), "vividly imagines a better tomorrow" - Washington Post*

### Summer Open-Air Concerts

All tickets are only \$28+GST!

We are thrilled to announce this year's line-up of incredible musicians who will deliver a memorable experience for all ages! Join us for some glorious outdoor concerts at Rosebud's Festival Stage just west of the Opera House!

#### Saturdays, 4:00pm throughout July & August

Saturday July 9th	Armond Duck Chief
Saturday July 16th	Dana Wylie
Saturday July 23th	Mariel Buckley
Saturday July 30th	John Wort Hannam
Saturday August 6th	Joe Vickers
Saturday August 13th	Lewis & Royal
Saturday August 20th	100 Mile House
Saturday August 27th	Maria Dunn

Bring a blanket or lawn chair, your sunscreen and hat, and enjoy incredible music in the heart of the Rosebud Valley. For more information on any of these events or to purchase tickets, visit [www.rosebudtheatre.com](http://www.rosebudtheatre.com) or call Ph: 1 800-267-7553

#### Performers Wanted!

The High Eagle Campground in Rosebud invites all Wheatland County bands/groups/soloists to register and perform on their outdoor stage free of charge this summer. Contact Ed at Ph: 403-820-0044, [high eaglerivpark.com](http://high eaglerivpark.com)



# ROSEBUD FALL PAINT OUT WEEKEND

SEPT 16-18, 2022  
ROSEBUD, AB

PAINT THE VALLEY  
with Artists from across  
Western Canada!

Register Now! \$40 per artist

- Includes:
- Welcome Swag
  - Artist Evening Socials
  - Participation in public Wet Paint Show & Sale, Sunday 1- 4 pm



FOR INFO & REGISTRATION:

ROSEBUDARTCOLLECTIVE@GMAIL.COM



## New **W. Ray Salt** collection added!

Rosebud & District Centennial Museum

The Rosebud Museum has recently been honoured to receive 55 watercolours, ink drawings and sketches of local birds and wildlife. Ranging from 1927 to mid 1970's many of these items were included in the 1st and 2nd editions of Alberta Birds as W. Ray Salt was one of the authors.

Ray Salt began painting wildlife in the Rosebud area in the late 1920s while he was a high school teacher at Severn Creek School in Rosebud, Alberta. He later went on to teach at Drumheller Composite, Mount Royal College and then as an anatomy professor at the University of Alberta. While he was in Rosebud Salt was invited to take falconry by correspondence and

soon Lady Rosebud's (photo) jess bells were heard throughout the valley. While he was in Rosebud Salt also encouraged the local residents to join him in raising pheasants at the campground to introduce them to the area.

The museum is raising funds to properly mount these historic items on an archival medium. To date, 12 items have been properly mounted and are now displayed. Interested sponsors can visit the museum or can send an e-transfer to rosebud.museum@gmail.com, indicating Ray Salt in the memo line or contact the museum at the same email address.

*Left: Ray Salt with young owl (May 9, 1929, Rosebud), Alberta courtesy of his granddaughter, Dr. Danielle Baxter.*

*Right: Ray Salt with falcon "Lady Rosebud"*







# Benefits of GRAZING

By Alyssa Barbero

The plains bison (buffalo) were the original grazers before cattle were introduced, domestic livestock have filled this role in many Alberta ecosystems now for decades. Grazing plays an important role in the grassland ecosystem which does not function well without it, continued utilization of grasslands by cattle helps to maintain the remnant grasslands that we have today. Native prairie grasslands are an extremely valuable and diverse ecosystem and is considered by many to be an endangered landscape. Sustainable grazing management has saved these remaining lands from becoming extinct.

Many grasslands also host non-native perennial species like smooth brome (*Bromus inermis*), kentucky bluegrass (*Poa pratensis*) and timothy (*Phleum pratense*) as well as many forbs such as alfalfa (*Medicago sativa*), clover (*Trifolium spp.*) and Dandelions (*Taraxacum officinale*). Grazing management strategies can help to reduce the competition between non-native plants so other more desirable species can regenerate and coexist. Grazing the non-native grass species can positively impact the native forbs (broad leaved plants) which supports biodiversity and the many different animal species living in a grassland. This also helps cycle nutrients building healthy soil, increasing the nitrogen and carbon through the vegetation growth period.

Grazing management strategies that help to increase plant diversity are beneficial for wildlife. Even though wildlife and livestock consume similar plant species, competition remains low when plant diversity is high, especially when the area has the appropriate amount of Animal Unit Months (AUM).

Because cattle are a grass dependent animal their competition with deer are low. Cattle will not consume enough forbs or brows to compete with wildlife unless a habitat lacks grass. Therefore, understanding proper grazing management with AUM's is extremely important in any cattle operation.

Livestock are beneficial to species at risk like swift fox (*Vulpes velox*), burrowing owl (*Athene cunicularia*), and greater sage grouse (*Centrocercus urophasianus*) as grazed grasslands provide food and shelter for these species. A composition of different vegetation types (ie height) provides shelter and habitat for a variety of species at risk. If an area is not grazed on a regular basis the amount of litter (dead grass from previous seasons) covering the ground becomes abundant. Although important for moisture retention and organic matter cycling, excess litter will impede new plant growth. Grazing helps to breakdown the litter, allowing sunlight to penetrate through to the understory allows for new plant growth.

Grazing can be very beneficial to grasslands if managed properly. Maintaining livestock on our endangered grasslands will keep these ecosystems healthy for generations to come.

## Alyssa Barbero

Agriculture and Environmental Services  
Program Coordinator

Ph: 403-361-2007

Email: [alysa.barbero@wheatlandcounty.ca](mailto:alysa.barbero@wheatlandcounty.ca)



# HAWK Posts

Encouraging hawks to nest and hunt on your land



There are 9 species of hawks in Alberta, many of which call Wheatland County home, including the common Swainson's Hawk and potentially, the provincially endangered Ferruginous Hawk. Hawks and other birds of prey can provide a valuable service to producers and landowners in the form of pest control. One pair of nesting hawks can consume up to 500 ground squirrels in a single nesting season! Installing hawk posts can encourage hawks to nest and hunt on your land.

Careful consideration of where to place a nest platform is important.

## 1. Native Prairie

Hawks often prefer areas that are composed of some native prairie habitat.

## 2. Prey for Hawks

Posts should be installed in areas with healthy populations of Richardson's Ground Squirrels (gophers).

## 3. Distant from other Nest Sites

Hawks are territorial, artificial nest poles should be located at least 800 m (half a mile) from other suitable nesting sites such as cliffs, trees and other functional artificial platforms.

## 4. Peace and Quiet:

Hawks can be very sensitive to human disturbance and they would be unlikely to use a nest platform near paved or gravel roads, power lines, oil and gas developments or farmyards.

Funding is available from Wheatland County for this type of project. Contact ALUS Wheatland Ph: 403-333-6943

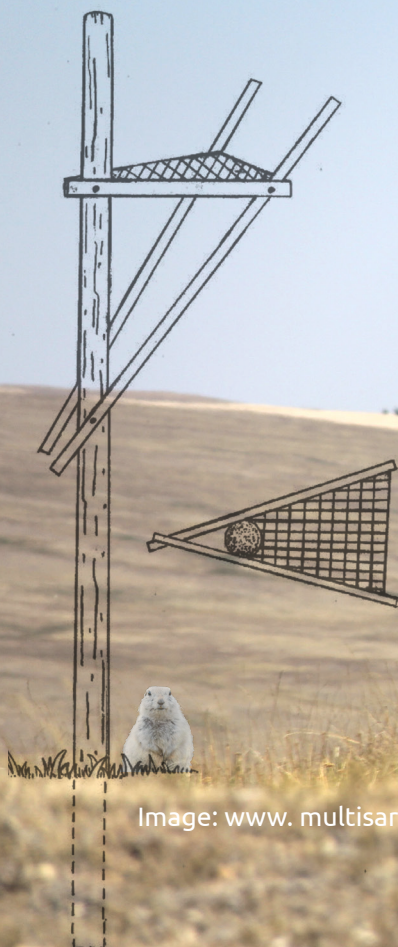


Image: [www.multisar.ca](http://www.multisar.ca)





## 2022 Gravel Sales Dates

Building a road approach or upgrading your driveway? Did you know, Wheatland County residents are able to purchase crushed gravel and pitrun at a reduced cost?

Gravel tickets can be purchased at the Wheatland County Administration office from Monday – Friday between the hours of 8:00 am and 4:30 pm, applications are available on the Wheatland County website at [wheatlandcounty.ca/documents/gravel-sales/](http://wheatlandcounty.ca/documents/gravel-sales/).

**Residents will be able to redeem their gravel tickets between 8:00 a.m. and 4:00 p.m. on the set days and locations as outlined below:**

### **July 5th and 6th, 2022**

Christensen Pit (Carseland)  
Located at NE-03-22-25-W4  
3/4" Crush & Pit Run

### **August 9th and 10th, 2022**

Fish Lake Pit (Dalum)  
Located at NE-28-26-18-W4  
7/8" Crush & Pit Run

### **Contact**

Michelle Van Haarlem  
Ph: 403-361-2000  
For additional information

## Dust Control

Wheatland County is now accepting applications for Dust Control. Prices and deadlines are as follows.

Calcium Chloride	
Spring application order deadline	May 20, 2022
Fall application order deadline	August 19, 2022
Prices	County Roads: \$5.33/meter (\$1.63/linear foot) plus GST
Oiling	
Deadline	July 8, 2022 (application order deadline)
County Roads New Application	\$22.40/meter (\$6.83/linear foot) plus GST
County Roads Redo	\$18.65/meter (\$5.68/linear foot) plus GST Redo rates apply if dust control has been done in the previous 10 years on the same site and at the County's discretion.
Gravel Secondary Highway New Application	\$25.68/meter (\$7.83/linear foot) plus GST
Gravel Secondary Highways Redo	\$21.93/meter (\$6.68/linear foot) plus GST Redo rates apply if dust control has been done in the previous 10 years on the same site and at the County's discretion.

- Payment must be received with completed application(s).
- Dust Control will only proceed if there is sufficient interest.
- Minimum order 122 meters (400 ft.).
- Wheatland County applies a one-time double spray application of calcium chloride for all purchased calcium dust controls.
- Applications are available at the County office or on the County website [www.wheatlandcounty.ca](http://www.wheatlandcounty.ca)





JULY 23 & AUGUST 20

10:00 AM – 4:00 PM  
MAIN STREET – ROSEBUD – AB

ROSEBUD  
ARTISAN MARKET

ARTISAN REGISTRATION & MARKET INFORMATION:  
ROSEBUDARTCOLLECTIVE@GMAIL.COM

## PROMOTING Wheatland County!

Attention Wheatland County agribusiness and tourism businesses



MERCANTILE

Wheatland County Food Initiative

## WC Mercantile

*Connecting the Agribusiness Value Chain*

Attention Wheatland County agribusinesses, the WC Mercantile initiative is a tool that facilitates a connection with the agricultural value chain and the interconnected web of farm to table participants from input suppliers, producers, processors, and retailers.

In the WC Mercantile we have categories for producers; processors, manufacturing and packaging; distribution, service providers; retail; and restaurants, caterers and chefs. If you are a Wheatland company that fits in somewhere on this value chain, register your business with WC Mercantile ([infinitewc.ca/wc-mercantile](http://infinitewc.ca/wc-mercantile)) today. It is a free service that provides you with publicity and makes good business sense!

## WC Experiences

*Showcasing our Infinite Landscapes and Tour 564*

With the summer tourism season approaching, Wheatland County tourism-focused businesses should be aware of the WC Experiences initiative that profiles local tourism businesses as part of the Tour 564 initiative.

More information can be found at [infinitewc.ca/tour564](http://infinitewc.ca/tour564)







*Mrs. Wades grade 5/6 class with their partners from Nutrien and Alyssa Barbero Wheatland County's Agriculture and Environmental Program Coordinator.*



## 2022 J. LASLO LEGACY AWARD

Our J. Laslo Legacy Award category was named in honor of the retirement of long-term Wheatland County employee Mr. Jim Laslo. During his career, Jim was Wheatland County's Agricultural Fieldman, and then General Manager of Agriculture, Community, and Protective Services. Jim's passion for education and outreach about agricultural conservation initiatives, and dedication to harnessing the innovation of the agricultural community, lead to the uptake of sustainable agriculture practices throughout the municipality. The J.

Laslo Legacy Award is presented annually to an agricultural producer in Wheatland County that has shown exemplary leadership in the implementation of beneficial management practices on their farm. Recipients show dedication to reducing the environmental impacts of their operation and make effort to promote lessons-learned through their work to others in the industry. We are pleased to present this well-deserved award to the Treacy Family!

The Treacy family operates Indian Springs Land and Cattle in the Wintering Hills of Wheatland County. Mitch and Rhonda, along with their daughter Abbey and son Cade with his wife Shae (the sixth generation to live and work here), use responsible management practices to steward the land, through practices such as no till seeding of legume cover crops, managed grazing, and conservation of native grassland. This in turn contributes to soil quality, increasing water absorption, decreasing runoff, building drought resistance, and recycled nutrients, while mitigating soil and water erosion, soil compaction, and loss of pollinating insect species. Our native grasslands play a critical role in carbon sequestration and in maintaining habitat for wildlife and ecological biodiversity. The Treacy family also works with renewable energy developers to facilitate wind energy projects in co-existence with their ranching operations.



Farming and ranching are inherently tied to the earth. Agricultural producers are masters of sustainability and some of the foremost, oldest stewards of the land, utilizing practices that have significant positive environmental impacts. Not just because their livelihoods depend on protecting the ecosystems they operate on, but because they have a deep connection to the land. However, they are also humble, hard workers who focus their time on growing and raising the food our world relies on. Their sustainability efforts are largely unacknowledged, while the agriculture industry battles criticism and misinformation. The role agriculture plays is irreplaceable for our future. What seems basic to our agricultural producers, like tilling technique and responsible grazing management has a profound long-term impact on our environment and our society as a whole and we need to tell the world.

## 2022 YOUTH STEWARDSHIP AWARD

Wheatland County's Agricultural Service Board presents the Environmental Stewardship Award program as a way to recognize and reward notable efforts within the community to practice environmental stewardship and innovation.

Wheatland County's Youth Stewardship Award was developed to recognize the importance of engaging youth in environmental stewardship initiatives, as the youth of today represent future generations of the Wheatland County community. We are proud to acknowledge the achievements and involvement of our youngest community members, as they inspire us to lead by example and sustain our environment for their benefit.

We would like to congratulate Mrs. Wades 5/6 class with the 2022 Youth Stewardship Award! While partnering with Nutrien as well as a Siksika Elder Darrell Breaker, Mrs. Wades 5/6 class created the Ik Ka Nutsi at Wyndham Park Program. Through this program the students have created QR codes along a trail at Wyndham Park. Not only do these codes teach history and a Blackfoot connection, but they also tell an overall message about the coded trail and how to take better care of our planet.



*Halo Water Chief accepting the award for Mrs. Wades grade 5/6 class with Alyssa Barbero Wheatland County's Agriculture and Environmental Program Coordinator.*

On behalf of Wheatland County and our Agricultural Service Board, thank you for everything you do to help educate our community. We commend you for your efforts and look forward to seeing the results of your work reflected in the county for generations to come. Our sincerest congratulations to everyone involved for earning these awards.

### **Now accepting nominations year-round!**

Nominations are accepted year-round, but must be received by November 1st in order to be considered for awards issued each March.

Environmental Stewardship Award Winners will receive an award certificate and \$250 to support their initiatives. In addition, they will be recognized during an award ceremony at Wheatland County's Annual General Meeting or other appropriate events and showcased through advertisement on Wheatland County's website, social-media, and in local newspapers and newsletters. Names of winners will also be displayed on plaques at the County Administration Office.





## Changes to Pesticide & Fertilizer Container Collection Program

Cleanfarms operates the collection program for <23L pesticide and fertilizer containers on behalf of Canada's leading developers, manufacturers, distributors and retailers of pest control products and fertilizers. Together, these companies support good stewardship in and away from the field.

Since the founding of the container management program (CMP) in 1989, Alberta municipalities have served as collection sites for pesticide & fertilizer containers. They have played an integral role in the success of this program. From our team to yours, thank you very much for your role in ensuring these containers were recycled responsibly.

Pesticide & fertilizer containers are collected at agricultural retail (ag-retail) locations in all Canadian provinces, except Alberta and Manitoba, where they are collected at municipal waste transfer stations and landfills. In August 2021, Alberta's Agricultural Service Board (ASB) passed a resolution (Resolution 2-21) to work with Alberta Environment and Parks (AEP) and Cleanfarms to shift the responsibility of collecting <23L containers from Alberta municipalities to ag-retail locations in the province.

Following the ASB Resolution, Cleanfarms staff brought a recommendation to Cleanfarms' Board of Directors to standardize the <23L pesticide and fertilizer container collection program across Canada by transitioning the collection to ag-retailers in Alberta and Manitoba. This recommendation was based on careful consideration of the additional benefits of a return-to-retail model, such as higher collection rates of containers, higher rates of rinsing containers, lower incidences of old chemicals being dropped off along with the empty containers, and harmonized logistics and communications across the Prairie Provinces. In September 2021, Cleanfarms' Board of Directors approved the recommendation to fully transition small container collections from municipal locations to ag-retail locations by the end of 2024.

Cleanfarms will use a phased approach to ensure that municipalities, ag-retailers, and growers have adequate time to adjust to the transition and ensure that all participating locations receive good service from collections contractors. The key to success for the transition will be effective engagement with the impacted sites and strategically managing workflow through careful and deliberate site selection in each phase of the process.

### What this means for municipal container collection site partners:

- Over the next three years (2022 through 2024), the collection of <23L containers will transition from a municipal collection model to an ag-retail collection model.
- In Spring 2022, ag-retail locations will have the opportunity to collect <23L containers (in addition to collections offered by municipal collection sites).
- There will be blended collection logistics for the duration of the transition period. Under this hybrid ag-retail and municipal model, Cleanfarms will pick up from both ag-retailers and municipalities.
- The closure dates of municipal collection sites between 2022 and 2024 are based on annual collection volumes:
- **By December 31st, 2024, all <23L containers will be collected at ag-retail locations.** Upon closure of the municipal site, Cleanfarms will work with municipal locations to ensure that all containers are removed within a reasonable time frame.

Site-specific collection volumes and estimated closure timelines are available through Cleanfarms.

[cleanfarms.ca/mb-ab-jug-transition/](https://cleanfarms.ca/mb-ab-jug-transition/)





# ALBERTA EFP

## ALBERTA ENVIRONMENTAL FARM PLAN

Demonstrate your commitment to environmental stewardship by completing an Environmental Farm Plan!

### More than 1200 Alberta producers have completed their EFP online!

- Confidential
- Free
- Up to date, easy to access the online workbook
- One on one support by a trained EFP technician
- 10 year renewal period



### What is Alberta Environmental Farm Plan?

The Environmental Farm Plan (EFP) is a voluntary, whole farm, self assessment tool that helps producers identify their environmental risks and develop plans to mitigate identified risks. We are working together with farmers committed to environmental stewardship.

### Benefits of completing your EFP

- Demonstrates your environmental stewardship
- increases your understanding of your environmental risks and how to mitigate them
- Reduces costs, increases efficiency
- access funding such as the CAP Farm Technology Program
- Can use as a future planning tool

### We're here to help!

#### Contact:

Sarah Schumacher, Wheatland County  
Ph: 403-333-6943  
Sarah.schumacher@wheatlandcounty.ca

We offer one-on-one virtual or in-person help sessions to help you complete your EFP. Register at AlbertaEFP.com and then book an appointment.

### Privacy

- AEFP is committed to protecting and respecting the personal information of you and your farm.
- Your EFP workbook and action plan belong to you, and are private and confidential.



# Rosebud FALL Paint Out Weekend

SEPT 16-18, 2022  
Rosebud, AB

**PAINT THE VALLEY**  
with artists from across  
Western Canada

Register Now! \$40/artist  
Includes: welcome swag, artist  
evening socials, participation in  
a public Wet Paint Show & Sale,  
Sunday 1-4pm

**Info & Registration**  
Rosebudartcollective  
@gmail.com

Wheatland County  
242006 Range Road 243  
Wheatland County, AB T1P 2C4

T: 403-934-3321 F: 403-934-4889  
wheatlandcounty.ca  
@wheatlandcounty