




ASB



2021 AGRICULTURE & ENVIRONMENT PROGRAM UPDATE



2021 AGRICULTURE & ENVIRONMENT PROGRAM UPDATE

TABLE OF CONTENTS

Introduction	Pg. 1
A New Look	Pg. 2
The Agricultural Service Board	Pg. 3
The Agriculture and Environment Department	Pg. 4
Supporting Agriculture & Environment	Pg. 6
Managing Weeds and Pests	Pg. 6
Recognizing Agricultural Achievement	Pg. 10
Environmental Stewardship Awards	Pg. 10
Bursary Recipients	Pg. 13
Supporting 4-H	Pg. 14
Protecting the Environment	Pg. 16
Landowner Support & Funding	Pg. 16
Operational Stewardship	Pg. 26
Wheatland County's Cattle Brand	Pg. 28
A Dry Year...	Pg. 29
Programs, Services and Rental Equipment	Pg. 30



INTRODUCTION

The Wheatland County Agriculture and Environment Department offers many services which are outlined in the 5th annual program summary. We are excited to share this information with our ratepayers, residents, businesses, external stakeholders, and our municipal neighbors.

This report is a great opportunity to showcase the programs and services offered by the County that support our agricultural industry and to share the successes we achieved in 2021.

A NEW LOOK



In 2021 Wheatland County updated our corporate branding identity which modernized our marketing elements to highlight the innovation that makes Wheatland County what we are. This is more than just a new logo, this change signifies our forward focus, aligns with our strategic plan, and symbolizes our new **Mission Statement: Where innovation meets tradition.** You can now find the new logo on new County documents and communications, and it will eventually be updated on signage.



The Agriculture & Environment logo was part of the communication portion of Agriculture & Environment's Strategic plan. The intent is not to replace occasions where the Wheatland County badge should be most appropriately used, but to create a sub-logo that honors County branding yet can be used for department-specific outreach activities and connection with the themes of agriculture and environment in the municipality.

The old logo is an essential piece of history and Wheatland County's identity. A few modifications were done to the old logo, and it is now re-purposed as the corporation's corporate seal. In addition, this logo is now an official logo for the use of Wheatland County Council in official documentation and other Council activities as they see fit for its use. This re-purpose pays homage to Wheatland's history and keeps its essence in use while still providing a means for the organization to update its corporate visual presence with the times.



THE AGRICULTURAL SERVICE BOARD

Wheatland County's Agriculture and Environment department is the present day representation of the 78-year history of Agricultural Service Boards in the Province of Alberta as key support for the agricultural industry, more than 30 years of agricultural conservation initiatives, and more recent public, consumer, and municipal attention to general environmental stewardship. Department activities are guided by the directions of the Wheatland County Agricultural Service Board and Council and we work in collaboration with all County departments to advance agricultural and environmental priorities as opportunities arise.

The Agricultural Service Board's specific responsibilities include weed control, agricultural pest management, soil conservation, and animal health as granted by various provincial statutes. The Board also provides our community's agricultural perspective on other matters.

Elected Board Members



Jason Wilson
Division 1 Councillor
ASB Chair



Shannon Laprise
Division 1 Councillor
NEW ASB Vice-Chair
Elected in 2021



Amber Link
Division 2 Councillor
Reeve



Donna Biggar
Division 3 Councillor



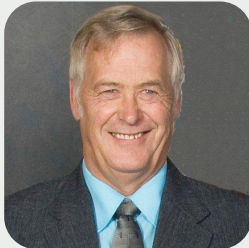
Tom Ikert
Division 4 Councillor



Scott Klassen
Division 5 Councillor
Deputy Reeve



Glenn Koester
Division 6 Councillor
ASB Vice-Chair



Ben Armstrong
Division 7 Councillor



Rick Laursen
Division 7 Councillor
NEW ASB Chair
Elected in 2021

Appointed Members at Large

ASB Vision

The Wheatland County Agricultural Service Board is committed to strengthening; promoting and supporting agriculture and the environment within our municipality with a view to continually improve how we operate in future years.



Barry VanLaar
ASB
Member-at-Large



Brittany Walker
ASB
Member-at-Large



Sandra Desmet
NEW ASB
Member-at-Large
(replacing Brittany Walker)

AGRICULTURE & ENVIRONMENT

Agricultural Service Board Strategic Direction



Employee Structure

General Manager of
Transportation and
Infrastructure

Manager of
Agriculture and
Environment

Administrative
Assistant to
Agriculture and
Environment (P/T)

Agricultural Services
Foreman

Agricultural Services
Officer

Agriculture and
Environmental
Program
Coordinator

Agricultural
Conservation
Coordinator (P/T)

Agricultural Services
Sub-Foreman

Seasonal Grader
Mower Operator

Seasonal
Equipment/Spray
Truck Operator

Seasonal Light
Equipment Operator
(2)

The Agriculture Service Board has special responsibilities in weed control, agriculture pest management, soil conservation and animal health. The board also provides our community's agricultural perspective on these and other matters.

ASB MISSION

The ASB develops and implements programs and policies that focus on the areas of weeds, pests, soil and water conservation and environmental issues for the benefit of all residents, in partnership with other government agencies, the agriculture industry and residents on agricultural programs and issues.

Goals

1. To operate as an effective, viable, pro-active Agricultural Service Board that fosters the growth and development of partnerships.
2. To promote agriculture and the rural way of life.
3. To be responsive to current issues and trends in agriculture and incorporate them into ongoing programs.
4. To help prevent the spread and establishment of invasive weed species through an integrated vegetation management program.
5. To help prevent the establishment and spread of declared pests and assist with the control of nuisance pests as described in the Agricultural Pests Act.
6. To maintain the integrity of agricultural soils through the delivery and support of the Soil Conservation Act.
7. To assist in the control of animal diseases under the Animal Health Act.
8. Increase awareness, understanding and implementation of environmental agricultural practices and programs, with an emphasis on supporting the agricultural industry.

The Agriculture & Environment Team

The Agriculture and Environment department contains a variety of technical expertise in the natural science fields and also includes knowledge about the agricultural industry in Wheatland County and local agricultural management practices. Knowledge of environmental legislation, local policy, management strategies and environmentally beneficial agricultural and industrial practices serves all County operations and ratepayers.

Our team also contains a high level of skill in equipment operation, vegetation management, pest and weed management, equipment maintenance, soil management, and land improvement, as is necessary for the provision of quality agricultural and environmental field services. Employees are well-integrated in regional and province-wide rural municipal agricultural and environmental programs, increasing information exchange and raising the profile of Wheatland County's agricultural and environmental operations.



Left to right: Sheldon Roes (Agriculture Services Sub-Foreman), Sarah Schumacher (Agricultural Conservation Coordinator), Gay Mowat (Agriculture and Environment Administrative Assistant), Jason Regehr (Agricultural Services Foreman), George Bloom (Agricultural Services Officer), Alyssa Barbero (Agriculture & Environmental Program Coordinator), Russel Muenchrath (Manager of Agriculture and Environmental Services)

A warm welcome to Alyssa Barbero The new Agriculture & Environmental Program Coordinator

Alyssa grew up on a ranch near Beaver Mines, AB. Her family runs 300 head of Red Angus Simmental Cross cattle on the Barbero Steelhorse Ranch. She graduated with an Ecosystem Management Bachelor of Applied Science at Lethbridge College and began working with Cows and Fish as a Riparian Technician. It was here, Alyssa soon found herself to be a plant nerd. Growing in her studies, she began a position as a Wetlands Biologist with a consulting company traveling Alberta and British Columbia.

After getting engaged to her college sweetheart, Alyssa landed in Strathmore looking for opportunities to grow in the agriculture industry. Finding a position with Wheatland County was where she wanted to begin her endeavors. In her free time, Alyssa keeps busy traveling down south to the ranch, fishing, hunting, skiing, motorcycling, or socializing with friends and family. You can always find her in the mountains scrambling up peaks, surfing behind the boat or working on the ranch. With her love for ranching, Alyssa hopes to bring new ideas to the table for Wheatland County's Agriculture and Environmental services.





SUPPORTING Agriculture & Environment

WEED MANAGEMENT

The Agriculture and Environment Department includes the Agricultural Fieldman and appointed Weed Inspectors, each of whom have responsibilities under the Alberta Weed Control Act. The Weed Management Program is comprehensive, using many different methods to reduce and eliminate the presence of provincially listed Noxious and Prohibited Noxious weed species in our municipality. Inspections of public and private lands are completed, concerns and inquiries from residents are responded to, education about weeds and how to manage them is extended to our community and weed control on County-managed lands is completed when necessary. The County has also participated in biological control projects, releasing insects for the control of specific weeds.

The Agricultural Service Officer is dedicated to weed management and is an excellent resource of information about vegetation identification and management.

A total of **185 weed inspections** were completed on public and private lands in summer of 2021. Wheatland County managed lands such as, County waste transfer sites, cemeteries, satellite shops, fire halls, road construction borrows, and sewage lagoons were all inspected and weed control was implemented.

Wheatland County has an agreement with the Villages of Rockyford, Hussar, and Standard for weed inspection services with 5 rounds of inspections occurring in 2021. Inspections also occur throughout the season in all County hamlets.

Wheatland County roads were also inspected with a total of **5470 kilometres of road surveyed**. The roads were followed up on throughout the summer months to ensure control of the most serious weed species was achieved. Follow up inspections from 2020 were also conducted to ensure proper control had occurred.

The Bow River is monitored yearly by Wheatland County ASB staff using canoes, looking specifically for purple loosestrife. It is optimal to survey and control in mid-August to mid-September when the plant is flowering as it stands out from the surrounding vegetative camouflage. All plants were treated with the herbicide Clearview and the flower tops were cut and bagged.



49 Purple Loosestrife plants were controlled in
12 locations along the Bow River

5470 Km of roads were inspected
185 Weed Inspections were completed

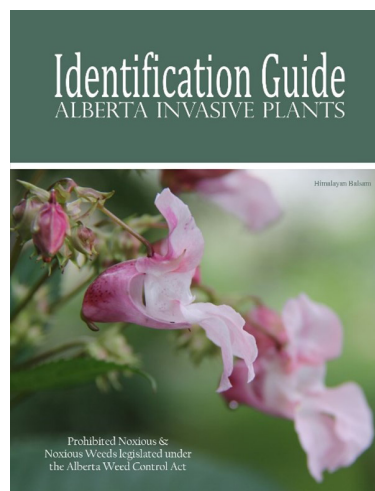
Check out our “Weeducation” series in the County Connector newsletter, containing information about weeds found in Wheatland County and how to control them!



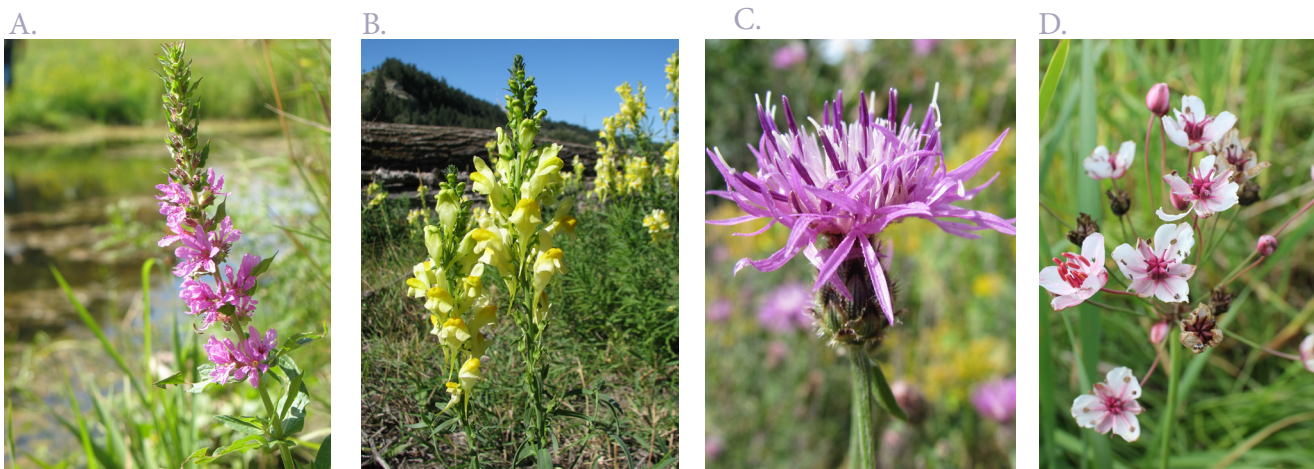
WEED IDENTIFICATION

The Agricultural and Environment staff are available to assist landowners with weed identification. Bring your samples to the office or email photos.

Stop by the county office and pick up a copy of our easy to use, pocket sized weed guide!



Can you identify these weeds?



A = Purple Loosestrike, B = Yellow Toadflax, C = Spotted Knapweed, D = Flowering Rush



PEST MANAGEMENT

Agriculture pests like Richardson's ground squirrels, grasshoppers, wheat midge and clubroot can have devastating impacts of crop yields. The pest management program aims to reduce the prevalence of agriculture pests in our municipality. We also contribute to provincial efforts to forecast pest populations so that our producers can plan accordingly.

Agriculture Pest Surveys have been a part of Wheatland County's program for many years. Surveys performed each year include Clubroot, Bertha Army Worm and Grasshoppers. In previous years, the department also participated in collecting samples of Fusarium Head Blight, Blackleg, Verticillium Wilt, Wheat Midge and Dwarf and Karnal Bunt.

Surveys/ Year	2015	2016	2017	2018	2019	2020	2021
Clubroot	100	100	95	108	103	100	127
Grasshoppers	51	44	42	48	45	43	62
Bertha Army Worm	6 Weeks	6 Weeks	6 Weeks	6 Weeks	6 Weeks	6 Weeks	6 Weeks



Richardson's Ground Squirrel Control

Richardson's Ground Squirrel (or gophers) are a natural cornerstone of food chains on the prairies, but they can be problematic on agricultural lands. Gophers cause crop destruction and create holes that injure livestock. Left unchecked, their populations can grow to large numbers very quickly. Wheatland County has sold 2% liquid strychnine to producers for many years to help reduce gopher infestations, but the federal government has opted to discontinue the supply of strychnine by 2021 with sales to end in 2022 and use by producers to end in March 2023.

Coyote Predation

Livestock producers facing predation problems can access support at Wheatland County. The Agriculture and Environment Department has programs available when coyotes become an issue, contact the department for more information!

CLUBROOT

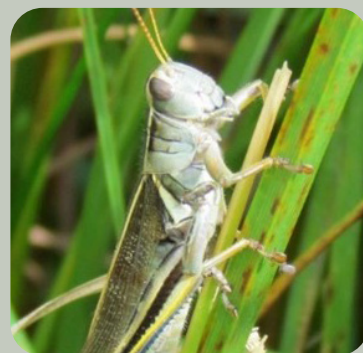
Each year Wheatland County aims to survey 100 canola fields for clubroot. Until 2020, clubroot was not found in our municipality, but survey efforts unearthed evidence of two infested fields. In 2021, **127 Clubroot Surveys** were conducted around Wheatland County, no additional fields tested positive for clubroot.

A provincial Canola Disease Survey was performed, 14 samples and were sent to the Crop Diversification Center in Brooks, AB for other disease testing



GRASSHOPPERS

Grasshopper Surveys were completed in the month of August. One survey per township was completed and data collection showed low numbers in majority of the townships in 2021.



FUSARIUM HEAD BLIGHT

Fusarium Head Blight along with Dwarf and Karnal Bunt surveys were completed this year by collecting wheat (Triticum) heads while in the hard dough stage in the crop i.e., no green heads. **18 fields** were surveyed collecting 500 heads per field, and sent to the Crop Diversification Center in Brooks, AB.



BERTHA ARMY WORM

Bertha Army Worm (*Mamestra configurata*) is one of the most significant insect pests of canola in Canada. This moth/larva is native to North America and when weather is unfavorable, such as cold winters and cool, wet weather numbers usually remain low. However, when weather takes a turn population can increase dramatically. This year's surveys were out from June 20th, 2021, until July 31st, 2021 and showed low numbers even with such a significant drought year in 2021.



AWARDS



Recognizing Agricultural Achievement

Wheatland County has many outstanding producers. The Agriculture and Environment Department recognizes leaders in the County who are using innovative management strategies on their farm and who are dedicated to agri-environmental stewardship.

Wheatland County's Agriculture Service Board is proud to see these agricultural achievements continue throughout the County. The Environmental Stewardship Award is a way to recognize and reward notable efforts in the community that promote environmental stewardship and innovation.

Awards Categories

J. Laslo Legacy

Recognizes an agricultural producer that has shown leadership in the implementation of beneficial management practices and dedication to reducing the environmental impacts of their operation.

Youth Stewardship

Recognizes the importance of engaging youth in environmental stewardship initiatives by honoring a young person who has shown leadership or strong interest in environmental stewardship.

Community Stewardship

Recognizes a Wheatland County community member or group that has made an outstanding contribution to environmental sustainability in the municipality.

Winners receive \$250 to put towards their initiatives and a display award to take home. Their names are added to plaques that are proudly displayed in our administration office and they are recognized for their positive efforts through local media promotion.

J. Laslo Legacy Award

Rod and Beth Vergouwen and Family

The J. Laslo Legacy Award is named in honor of the retirement of long-term Wheatland County employee Jim Laslo. During his career, Jim was the Agricultural Fieldman, and then General Manager of Agriculture, Community, and Protective Services. Jim's passion for education and outreach about agricultural conservation initiatives, and dedication to harnessing the innovation of the agricultural community, led to the uptake of sustainable agriculture practices throughout the municipality.

The J. Laslo Legacy Award is awarded to an agricultural producer in Wheatland County that has shown exemplary leadership in the implementation of beneficial management practices on their farm. The winner will have shown dedication to reducing the environmental impacts of their operation and has an interest in promoting lessons from their efforts to others in the industry.



Left to right: Rod Vergouwen, Beth Vergouwen, Jenna vergouwen-Garner, Graydon Garner, Jack Vergouwen



For over 110 years, the Scheer-Vergouwen family have been stewards of their land and the animals they raise on it. Beth and Rod Vergouwen, along with their son Jack, daughter Jenna, and son-in-law Graydon, maintain over 600 head of cow-calf pairs and yearlings on Valley View Ranch.

In 2019 the Vergouwen's joined the ALUS Wheatland community. They wanted to improve the health of a wetland on their land and change the grazing management of their herd. By using an off-site watering system, the Vergouwen's have reduced the grazing pressure on the wetland riparian area and improved the health and distribution of their cattle. The Vergouwen's contribute to cleaner water, improved habitat, biodiversity and flood and drought resilience for our community.

Rod specifically, has been an active and engaged member of the Foothills Forage & Grazing Association for more than 15 years, serving on the Board of Directors and currently as the Chairman.

Rod continues to push the bar forward on soil health, water retention and anything related to livestock production. The Vergouwen's also have an Environmental Farm Plan, are certified by the Verified Beef Production Plus program and have undertaken thistle management projects that utilize grazing and control.

Over the course of their time running Valley View Ranch, Beth and Rod have committed to many programs and projects to help improve the health of their animals and their land. Family pride in the land and in incorporating stewardship into their work is evident throughout the family. Check out their work at flyingheart.ca.

Community Stewardship Award

The Rosebud Beautification Committee

Rosebud is a small-town rich with culture and history. They have made an outstanding contribution to environment sustainability in Wheatland County. For the past seven years, the Beautification Committee of the Rosebud Community Enhancement Society (RCES) has enhanced the hamlet through flower and tree planting projects. Flower boxes embellish every corner of the hamlet while residents and visitors can enjoy the shade and beauty of trees for decades to come. The nomination named Charlotte Riegel and Helen Zacharias as project coordinators for flower boxes, Fiona Lauridsen for design expertise, John and Sue Miller for fundraising and logistical support, and newer members Elly Krogman and Jonny Hamm for spearheading an ambitious tree planting project and bringing rich backgrounds and passion to the committee. In 2019, Elly and Johnny expanded the committee's mandate with a three-year plan for planting trees and shrubs around town. In addition to Wheatland County's Community Enhancement Regional Board (CERB) grant, Elly and Jonny solicited funds through tree



**Sue and John Miller with
Russel Muenchrath (Wheatland County)**

sponsorships which were sold out within weeks. It is truly a team effort to create designs, begin growing, and care for flowers, shrubs, trees, and herbs, while fundraising the amount necessary to make projects a success. Planting projects are coordinated by the committee as town-wide events to get everyone involved from children to seniors, so the committee goes above and beyond to include, inspire, and encourage others as well.



Jahfyrn Cormack

Youth Stewardship Award

Jahfyrn Cormack

We are proud to acknowledge the achievements and involvement of our youngest community members as they inspire us to lead by example and sustain the environment for their benefit.

Jahfyrn Cormack is a nine-year-old, grade four student that puts in as many hours as an adult in helping beautify the hamlet of Rosebud. With an exceptional work ethic, Jahfyrn helped harvest the community potato patch, sharing the potatoes with people living in town, and participated in Rosebud's first annual tree planting work bee. He is eager to help his family seed and water their garden plot and shows huge pride in digging up the carrots he planted himself.

Jahfyrn's heart for the land inspires people across generations. Thank you Jahfyrn for all your hard work and thank you to those who brought his name to our attention. Keep up the good work!

ASB BURSARY

Wheatland County's Agricultural Service Board recognizes our young residents and the critical role they play in the next generation of agriculture and environmental science. These bursaries are dedicated to post-secondary students from our community that are studying in these areas to help them continue with their goals. Up to \$6000 in bursaries are distributed each year through this program.

Agriculture and Environmental Science goes hand in hand. Agrology is dedicated to the careful management of natural features like soil, wildlife, water, and vegetation so farms can rely on the sustainability of these key resources.

Congratulations to the 2021 Bursary Recipients



Landon Hebbes

Agricultural
Management
Production



Reid Regehr

Animal Science
Technology: Beef
Science



Layne Neal

Diesel Equipment
Technician

The next intake deadline is August 30th, find the 2022 application forms at
wheatlandcounty.ca/documents/asb-bursary



4-H SUPPORT

For more than 100 years, 4-H has been one of the most highly respected positive youth development organizations in the country.

4-H believes in nurturing responsible, caring and contributing leaders who are committed to positively impacting their communities.

The four H's represent core values:

- **Head: managing, thinking**
- **Heart: relating, caring**
- **Hands: giving, working**
- **Health: being, living**

One of the world's largest youth organizations, 4-H can be found in more than 70 countries across the globe. 4-H in Canada has more than 23,500 members and 7,800 volunteers.

This year, Wheatland County's Agricultural Service Board was pleased to support the Rockyford and Hussar Beef and Standard Sheep 4-H Sales. Wheatland County is proud to see young agricultural farmers and ranchers grow in the industry and take on these challenges.

By purchasing Luke Sevick's Steer, Maysa Schiffner's Steer and Colton Webster's Lamb we are excited to continue our engagement with local 4-H Clubs. Wheatland County is honored to be supporters of such an amazing program. Congratulations to all 4-H members on your achievements.

4-H PLEDGE

I pledge

*My **head** to clearer thinking,*

*My **heart** to greater loyalty*

*My **hands** to large server,*

*My **health** to better living.*

For my club, my community,

my country, and my world.



Celebrating Young Producers!



MAYSA SCHIFFNER
*and her steer from
Rockyford Beef Club 4-H
Show & Sale*



COLTON WEBSTER
*and his Lamb from
Standard 4-H Sheep Club
Show & Sale*



LUKE SEVICK
*and his steer at the
Hussar 4-H Beef Club
Show and Sale*



PROTECTING OUR ENVIRONMENT

Wheatland County recognizes the necessity of meeting increased environmental challenges in a way that best suits our community, responding with the development of our environmental activities.



Operational Environmental Compliance

Ensure that all aspects of County operations comply with, and exceed where possible, applicable environmental legislation.



Environmental Communications

Incorporate environmental communications into general Wheatland County communications to raise awareness about environmental initiatives and current issues, topics, and events, and to promote achievements and programs.



Environmental Education

Educate staff, Council and the public on matters of local and regional environmental importance to increase community knowledge of relevant topics and issues.



Technical Support

Provide a source of local or internal information and support for staff and the public on matters related to the environment.



Advancing Environmental Sustainability

Support, maintain, improve, and coordinate programs, activities and partnerships that act to advance environmental sustainability locally or regionally and benefit Wheatland County and its residents.

LANDOWNER SUPPORT

A core component of Agriculture and Environment's Department suite of services is our education and extension programs. Through a variety of funding programs and educational opportunities, Wheatland County works hard to ensure that supports are available to our producers and landowners as they strive to manage their lands, homes and businesses sustainably.

ACCEPTING SOIL ONTO AGRICULTURAL LAND

As high rates of development occur west of our County, excess soil is being offered to landowners. There are risks associated with accepting such soil onto agricultural lands and methods of mitigating them. Wheatland County intends to help support our agricultural producers in protecting themselves and their neighbors from any unforeseen consequences that may occur.



Producers must be vigilant when accepting any bulk soil onto agricultural lands to ensure that productivity is not impacted and weeds and pests are not introduced.

We must work together to ensure that the high quality agricultural land base in Wheatland County is maintained.

Risk Areas

CELEBRITY

Regulated under the Agricultural Pests Act for its ability to have devastating effects on cropland crops like canola, oat and wheat, the Canada Oatworm has been discovered in three neighboring municipalities.

Wheatland County does not yet have a control case of this soilborne disease, but increased movement of soil into our jurisdiction greatly increases the risk of a large infestation.

WEEDS

The potential movement of weed infestations into or throughout the County through bulk soil transfers is a cause for concern. Weeds cause economic and landscape issues, affecting our agricultural community. Depending on the type of weed and severity of an infestation when bulk soil is used, it can be difficult to eradicate. Early detection and response is critical.

SOIL QUALITY

"The quality of soil is affected by the clay that is being used in agriculture (bulk soil) and is not always met standard expected to be the same. Bulk quality issues associated with this type of soil transfer include low organic matter content, high clay content, salinity, rocks, and garbage."

EROSION

When the objective of placing bulk soil is to improve drainage or reduce standing water, landowners must be aware of potential impacts to neighboring properties and rules that apply to this activity. Disposed water can flow or damage other properties, and landowners may be required to take measures for potentially unauthorized activities leading to regulatory problems for the landowner.

SUGGESTIONS FOR PROTECTING AGRICULTURAL LAND AND LANDOWNERS FROM RISKY BULK SOIL DECISIONS

1. SCRUTINIZE THE SOURCE

Photos are local examples of agricultural problems caused by soil accepted from developers.



Site inspections help to ensure that materials on County sites are piled neatly and in a way that ensures any possible contaminants would be contained in case of rainfall or accidental spills.



Canada Agriculture Partnership (CAP)



The CAP **Water Program** assists primary producers in enhancing agricultural water management for continued growth and long-term success of the agriculture industry. There are two streams under the Water Program: 1) on-farm irrigation projects, and 2) on-farm water supply projects. Retroactive to April 1st, 2018. Eligible expenses will be cost-shared at 25% grant and 75% applicant, except for special incentives at 50% grant and 50% applicant.

The most common project in 2021 was for drilling new wells. Others included well abandonment projects, off-site watering systems (dugouts), fencing dugouts, new dugouts, and upgrades to low pressure center pivot systems. Many of the CAP programs were either closed or were re-named in June 2021.

The new **Farm Technology Program** requires a valid Environmental Farm Plan (completed and approved in the last 10 years). The Farm Technology Program supports producers in protecting their business by encouraging the adoption of best management practices in farm technology and security.

cap.alberta.ca

In 2021

We assisted 31 producers with CAP applications

Environmental Farm Plan (EFP)

The Environmental Farm Plan (EFP) is a voluntary, whole farm, self-assessment tool that helps producers identify their environmental risks and develop plans to mitigate identified risks.



Wheatland County Partners with Alberta Environment and Agricultural Research and Extension Council of Alberta (ARECA) to promote the program as a social license tool and encourages producers in Wheatland County to complete an Environmental Farm Plan. Technical assistance is also provided to any producer who wishes to complete an Environmental Farm Plan in Wheatland County.

www.albertaefp.com

In 2021

- 23 EFP Started
- 12 EFP's Completed
- Technical assistance is provided to any producer who wishes to complete an Environmental Farm Plan in Wheatland County.

Sample Question

2. Water testing for household use *

Select n/a for any water sources that are NOT used for HOUSEHOLD use

1	2	3	4
Monitoring and testing of water quality on a regular basis (1 to 2 years). Records kept and used for comparison.	Monitoring and testing of water quality on a regular basis (1 to 2 years).	Monitoring and testing of water quality done occasionally.	Water is never monitored or tested for water quality.

Sample Action Plan

2. Water testing for household use

Go to Question



1	2	3	4
Monitoring and testing of water quality on a regular basis (1 to 2 years). Records kept and used for comparison.	Monitoring and testing of water quality on a regular basis (1 to 2 years).	Monitoring and testing of water quality done occasionally.	Water is never monitored or tested for water quality.

Resource	Rating	Area of Concern
Water Source: Drilled Wells	3	Monitoring and testing of water quality done occasionally.

Short Term Action * (within 2 years)

Test well water quality on an annual basis



Pollinator Projects

Putting the Buzz in Agricultural Production

The value of pollinators and the benefits of establishing pollinator projects on your farm

The pollinator species that live on your farm are not limited to just bees, but also include butterflies, moths, beetles, and birds. These species are so important, they play an essential role in plant reproduction and seed production for many of our food crops. Many of these species are also considered pest suppressing and can help to control insect pests. The economic value of the services that pollinators provides to Canadians is in the billions of dollars each year.

When considering plant species for your pollinator project, it is important to include many different species to ensure that there are flowers blooming from May to October (or as long as possible). It will also be important to manage grazing rotations carefully (ie. single pass, late season) to maintain forage production and the function of your project.

Pollinator projects can be established on marginal farmland such as field edges, corners, eroded lands, hill tops, saline areas and riparian streambanks. Pollinators will often benefit from having a nearby water source (i.e. wetland) and winter habitat can be provided in shelterbelts or ecobuffers that could also include flowering species (ie. Saskatoon, Lilac, Chokecherry, or Prickly Rose). Avoid disturbing the soil in your project area as many as 80% of insect pollinators burrow in the ground.

If you build it, they will come. Alberta studies show that the number of pollinator species will increase once a project has been established.

Forage species selection, establishment & management

There are benefits of both native and agronomic plant species for a pollinator project, native plants may have a more beneficial relationship with pollinators, whereas agronomic species will have a more palatable cost-benefit. Which species you choose will depend on your goals, budget and time commitment.

Establishment can be difficult due to spring moisture deficits and competition from weeds. It will be important to deal with any weed issues in advance of seeding. Consider planting bunch grasses or other non-aggressive grasses to diversify your forage species, and especially if planting bloating legumes. Although native species don't require fertilizer, it will benefit the agronomic species. Soils that are deficient in Phosphorus will hinder seedlings establishment. Once established (in a biodiverse mix) legumes will be better able to liberate unavailable P from the soil.

Funding options for pollinator projects

The Wheatland Agricultural Stewardship Program (WASP) will fund pollinator projects on agricultural land at 50% up to \$5000.

ALUS Wheatland provides annual financial support to producers, applicants to the WASP program are eligible for up to \$300/acre/year.

Visit www.awes-ab.ca/publications/native-pollinator-friendly-plants

For more program information contact

Sarah Schumacher Ph:403-333-6943 or
Sarah.Schumacher@wheatlandcounty.ca



ALUS



Creating Healthy Landscapes that Sustain Agriculture, Wildlife and Natural Spaces for all Canadians

ONE ACRE AT A TIME

ALUS Wheatland

ALUS is a national charitable organization with a goal to create a healthy landscape that sustains agriculture, wildlife, and natural spaces. The ALUS program helps farmers produce valuable ecological services on marginal Canadian farmland by providing funding for beneficial management and environmental-enhancing projects.

In 2018, Wheatland County signed the first Memorandum of Understanding with ALUS Canada. This partnership allows producers in our municipality to access national funding sources from ALUS.

ALUS is a community-led, farmer-delivered program for producers that pays for management and maintenance of ecosystem services on marginal farmland.

ALUS Wheatland is governed by the local Partnership Advisory Committee (PAC), who makes decisions about how available funds are spent within the community. The 2021 the PAC consisted of Jason Wilson (County Councillor, ASB Chairman, PAC Chair), Scott Klassen (County Councillor, ASB Member, PAC Chair Alternate), Barb Archibald (Alberta Agriculture and Forestry representative), Derek Hallgrimson (Ducks Unlimited Canada representative, PAC), Barry Van Laar (ASB Farmer Member, PAC), and Brittany Walker (ASB Farmer Member, PAC).

In 2021

- **9 farms** joined the ALUS Wheatland program
- **348.8 Acres** were enrolled into the ALUS program, these acres been enhanced through projects that provide ecological benefits on the landscape

Thank you for supporting our 2021 ALUS program

- the Calgary Foundation
- the Canada Nature Fund for Aquatic Species at Risk (DFO)
- Grazing Forward (Cargil and A&W Canada)
- EcoAction (Environment and Climate Change Canada)

ALUS

ALUS.ca

Wheatland Agriculture Stewardship Program



This program provides financial assistance to farmers and ranchers in Wheatland County who want to produce clean air, clean water, provide soil protection, to promote biodiversity and other ecosystem services in our community. Annual payments are available for approved projects through the ALUS Wheatland program.

Project Examples

The following are project examples only, the program is not limited to the list below.

- Riparian Streambank Fencing
- Offsite Watering Systems
- Wetland Restoration, Enhancement and Creation
- Riparian Streambank Buffers
- Native Prairie Establishment
- Pollinator Habitat Projects
- Riparian Streambank Enhancements
- Field Shelterbelts
- Wildlife Friendly Fencing
- Nesting Structures
- Modified Agricultural Activities to promote Wildlife Habitat
- Tree and Shrub Planting for Ecobuffers
- Other projects which provide ecosystem services and are approved by either the Wheatland County Agriculture and Environment Department or ALUS Wheatland Partnership Advisory Committee.

Off-site watering systems like this one help to steer cattle away from direct use of water bodies. Studies have shown that cattle gain better when using the off-site watering system rather than drinking directly from the source of water.

In 2021

- Landowners may receive a maximum of \$5000 at a cost share of 50%.
- Applications are approved by the Agriculture and Environment Department on a first-come, first-served basis
- 3 applications received and approved, 1 project completed
- This program is not retroactive.

Shelterbelt & Ecobuffer Seedling Program

This program offers support for landowners wanting to plant trees and shrubs throughout the County.

\$2.50 per plant to a maximum of **\$1,000** is available for the purchase of tree and shrub seedlings. **50%** up to a maximum of **\$500** is available for drip irrigation and/or mulch materials.

\$11,721.00 was extended to landowners through the program in 2021 for 19 shelterbelt planting projects, resulting in 5258 seedlings planted in the County.

Benefits of shelterbelt and ecobuffer-style planting projects include:

- Improved energy efficiency of homes and farm buildings,
- Provides wildlife and pollinator habitat,
- Decreases soil erosion, and
- Adds to the aesthetic value of our prairie landscape.

What is an EcoBuffer?

Ecobuffers are a little different than the typical 3-row shelterbelts we are used to seeing. Usually they are at least 5 rows and planted with the intent to create a dense, multi-species area that is great for wildlife habitat and pollinators while serving similar functional purposes to shelterbelts!





- 18 Off-site watering systems funded
- 10 Riparian Health Inventories completed
- 9,108m Riparian fencing installed
- 51,870m Creek positively impacted

ROSEBUD WATERSHED FUNDING PROGRAM

Ranchers play an important role in protecting riparian streambanks and improving water quality in the Rosebud Watershed. These projects also benefit livestock health and flood and drought resiliency on a farm.

The Rocky View County and Wheatland County agricultural departments are excited to work with producers in our region over the next few years on streambank projects.

Applicants to this program may also be eligible for ALUS funding which pays landowners annual per acre payments for conservation projects.

Program Contacts

Wheatland County
Sarah Schumacher
PH: 403-333-6943
Sarah.Schumacher@wheatlandcounty.ca

Rocky View County
Matthew Chilakos
PH: 403-478-8277
Email: MChilakos@rockyview.ca

Western Irrigation District
Brian Sanders
PH: 403 934-3542 ext.239
Email: bsander@wid.net



Wheatland Safe Water Wells Action Program

This program provides financial assistance to landowners who are protecting groundwater quality in Wheatland County.

Abandoned Wells

Abandoned (un-used) water wells pose a serious threat to ground water quality and are a safety hazard on farms and acreages.

Under the Alberta Water Act, all abandoned wells must be decommissioned by an approved water well drilling contractor and is the responsibility of the landowner.

Funding Level: 75% up to \$2500 per well

Well Pits

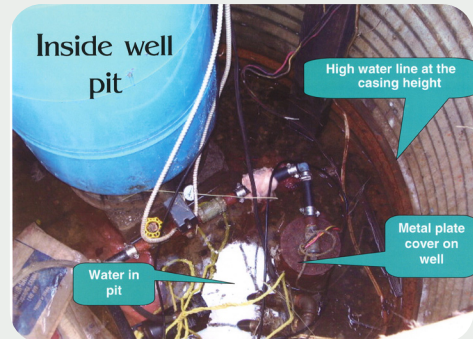
Well pits increase the risk of contamination to groundwater because they provide a place for water and contaminants to collect. Well pits often have dangerous air quality conditions.

Well pits can be eliminated by relocating the pressure system, extending the existing well casing above ground level, installing a pitless unit on the well casing and backfilling the pit.

Funding Level: 75% up to \$3500 per well

In 2021

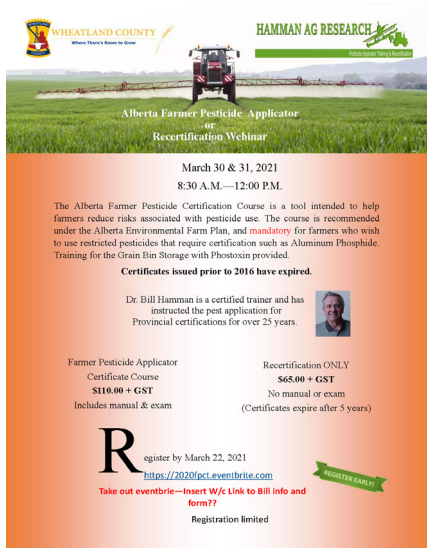
- Landowners may receive a maximum of \$6000 over a three-year period on a combination of projects.
- Applications are approved by the Agriculture and Environment Department on a first-come, first-served basis
- Work on groundwater wells must be completed by a certified well driller.
- 9 applications received, 7 transferred to 2022
- 2 projects completed
- This program is not retroactive.



Well pit showing contaminated surface water draining into a well and a corroded well casing (coated in mouse hair) from an abandoned well.

EDUCATIONAL OPPORTUNITIES

Throughout the year, we hosted and partnered on many extension opportunities for landowners and producers. Despite the challenges that came with 2021, we were able to hold a number of virtual and in-person events that were well attended.



WHEATLAND COUNTY
Where Things & Animals Go Online

HAMMAN AG RESEARCH
Grain & Soybean Research

Alberta Farmer Pesticide Applicator or Recertification Webinar

March 30 & 31, 2021
8:30 A.M. – 12:00 P.M.

The Alberta Farmer Pesticide Certification Course is a tool intended to help farmers reduce risks associated with pesticide use. The course is recommended under the Alberta Environmental Farm Plan, and mandatory for farmers who wish to use restricted pesticides that require certification such as Aluminum Phosphide. Training for the Grain Bin Storage with Photosyn provided.

Certificates issued prior to 2016 have expired.

Dr. Bill Hamman is a certified trainer and has instructed the pest application for Provincial certifications for over 25 years.

Farmer Pesticide Applicator Certificate Course
\$110.00 + GST
Includes manual & exam

Recertification ONLY
\$65.00 + GST
No manual or exam
(Certificates expire after 5 years)

Register by March 22, 2021
<https://2021pct.eventbrite.com>
Take out eventbrite - Insert W/Link to Bill info and form??
Registration limited

Alberta Farmer Pesticide Applicator Certificate
March 22th - Virtual



FARM Transition Webinar
with Merle Good, Farm Tax Specialist

March 4th, 2021 - 7:00pm

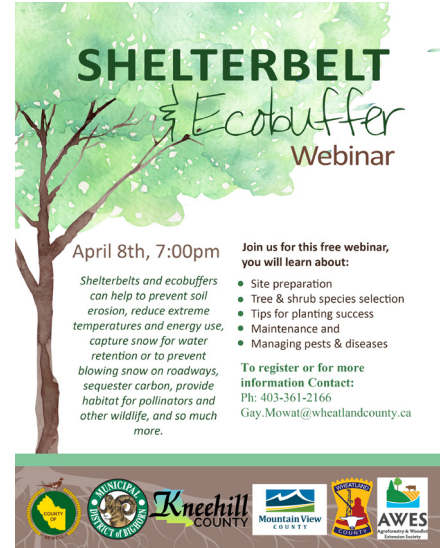
Farm Business Succession Planning – Simplifying a Complex Puzzle
In order to complete a puzzle, you need to have the right pieces in the right place at the right time. If not, you will become frustrated and quit. Sounds familiar? To tackle this family farm succession puzzle, this seminar will focus on NOT describing the challenges but actually SOLVING them. Strategies and options will be presented to provide clarity of operating ownership, to create tax free retirement income and address the elephant in the room; being explosive land values.

Made worked for over 30 years in the Alberta Provincial Farm Tax Specialist and continues to work with top accountants and lawyers throughout Canada and on a weekly basis speaks at over 25 public seminars and assists over two hundred farm clients per year.

This expense, combined with years of client consultation, plus his practical experience of owning and operating a multi-generational farm has created a unique combination of skills and insight to enable clients to meet their business and personal goals.

Register at
www.rockyview.ca/agricultural-events
For information contact Ph:403-333-6943 or Sarah.Schumacher@wheatlandcounty.ca

Farm Transition Webinar
March 4th- Virtual
163 Live



SHELTERBELT & Ecobuffer Webinar

April 8th, 7:00pm

Shelterbelts and ecobuffers can help to prevent soil erosion, reduce extreme temperatures and energy use, capture snow for water retention or to prevent blowing snow on roadways, sequester carbon, provide habitat for pollinators and other wildlife, and so much more.

Join us for this free webinar, you will learn about:

- Site preparation
- Tree & shrub species selection
- Tips for planting success
- Maintenance and
- Managing pests & diseases

To register or for more information Contact:
Ph: 403-361-2166
Gay.Mowat@wheatlandcounty.ca

Shelterbelt & Ecobuffer Webinar
April 8th - Virtual
28 live + 32 views



FOOTHILLS FORAGE AND GRAZING ASSOCIATION PRESENTS:
GRAZING MANAGEMENT TOUR

We're back and excited to bring you our first Summer Grazing Tour of 2021!

Agendas:

- Jim Bauer - Grazing Management
- Jason Williams - Electric fencing
- Jerry Baerg - Tour host & grazing strategies (inc. watering systems)
- Graydon Garner - Ducks Unlimited Funding Programs
- Producer Panel - Grazing Annals (including commodity crop grazing strategies, swath grazing & more)

Details:

- July 14th, 2021
- Meet at Ribboncreek Ranch (see Eventbrite for Directions) & Swallow Community Hall
- Cost: \$20.00/FFGA Member, \$25.00/Non-member + GST (includes lunch)
- Registration - 8:50am in the field, the day will end around 3:00pm

We will spend the morning outside touring Ribboncreek Ranch and the afternoon will be spent in the Hall. Dress for the weather.

REGISTER BEFORE JULY 9TH AT: <https://grazingmanagement.eventbrite.ca>
IF YOU HAVE QUESTIONS OR NEED HELP REGISTERING CALL 403.700.7400



Grazing Management Tour
July 14th - In-Person
56



Pollinator Projects
Putting the Buzz in Pasture Management Webinar

March 31st 10:00am

Learn more about

The value of pollinators and the benefits of establishing pollinator projects

Identifying locations for pollinator projects on marginal lands

Forage species selection, establishment, management & longevity

Funding options for pollinator projects

With speakers:
Grant Lastwika, Forage Specialist & Luke Wanneker, Agroforestry Project Specialist

Register at
<http://bit.ly/3tkvALE>
For information contact Ph:403-333-6943 or Sarah.Schumacher@wheatlandcounty.ca

Pollinator Projects Webinar
March 31st - Virtual
68 Live + 16 views



Green Acreages
Stewardship for Small Acreages

Do you own an acreage, hobby farm or recreational property?
Then plan on attending this free virtual workshop.

Join us at this upcoming Green Acreages workshop

HOSTED BY: Wheatland County

DATE: Thursday, January 28, 2021

TIME: 7:00-8:30pm

COST: FREE

PREREGISTER TODAY AT:
<https://bit.ly/3or49ID>

During this live, online workshop you will learn about stewardship and how to:

- Better manage and improve your property.
- Evaluate your acreage.
- Map your property assets and plan your activities.
- Access funding to help with a stewardship project and the projects that qualify.
- And more.

Presented by Land Stewardship Centre
landstewardship.org

Green Acreages Workshop
January 23rd - Virtual
12 Live



TALK ASK LISTEN

The Do More Agriculture Foundation

Mental Health Webinar
12 Live

Check out the County Connector newsletter, County Facebook page and website for more information on upcoming events in 2022!



Red-Bow Agricultural Partnership

The Red Bow Agricultural Partnership is a municipal collaboration created with the purpose of sharing resources, information, knowledge and facilitating networking opportunities for the benefit of sustainable agriculture within the rural communities in which they operate.

The current partnership consists of Clearwater County, Kneehill County, M.D. of Bighorn, Mountain View County, Red Deer County, Rocky View County, and Wheatland County. Cows and Fish, Foothills Forage and Grazing Association, the Grey Wooded Forage Association, Lakeland College, and the Olds College Livestock Technology Access Centre are resource partners.

The Ranching Opportunities Conference and Ladies Livestock Lessons were combined because of the need to hold the event virtually.

February 2nd, 2021

136 registered, 83 attended live, 28 post event views
Topics: lessons learned about riparian management panel discussion, mineral issues and water quality (with a local veterinarian).

February 4th, 2021

149 registered, 96 attended live, 23 post event views
Topics: Orphan wells, upcoming ranching technologies, direct marketing panel

IN-LIEU of Ranching Opportunities & Ladies Livestock Lessons

The Red-Bow Ranching CONFERENCE

Save the date
FEB 2&4 2021
Ranching in a New Era

To register and for the current conference agenda and speakers visit www.redbowag.com

Thank you to our Sponsors

 **AFSC**
Unique Financial Services

Webinar Sessions

February 2nd 12:30pm 20 Years of Riparian Management Solutions Ken Lewis - Red Deer County Kelsey Spicer-Rowe - Cows & Fish Stephen Smith - Speedwell Farms When Minerals Go Bad Dr. Elizabeth Hornerosky - Veterinary Agri Health Services	February 4th 12:30pm Direct Marketing Producer Panel Lorin Doerksen - Gemstone Cattle Company Ben Campbell - Grazed Right Orphan Wells on your Ranch Lars DePauw - Orphan Well Association Smart Ranch Innovations Sean Thompson - Olds College, Technology Access Centre for Livestock Production
--	---

Register at
WWW.REDBOWAG.COM



OPERATIONAL STEWARDSHIP

A primary focus of the County is to ensure that our operations (such as construction, gravel pits and utilities) are in compliance with applicable provincial and federal legislation. Through this work, Wheatland County aims to proactively identify areas where improvements need to be made and mitigate environmental risks.

Soil Conservation

Grass seeding and soil erosion control of ditches and borrow areas associated with road construction. Reclamation of soils in collaboration with Transportation.

Roadside Seeding & Erosion Control

- 4 km of road construction right of ways seeded.
- 55 Acres of road construction borrow areas seeded.
- 88 bales of Eco-Tac used for erosion control on road construction jobs.

Vegetation Management

Wheatland County operates a unique system which allows for simultaneous mowing and spraying. With our vegetation management we aim to control the presence and spread of weeds that can impact agricultural productivity or cause harm to livestock. Mowing our county roadsides has the added benefit of improving safety for the traveling public by increasing sight lines for wildlife and to help reduce snow drifting.

Roadside mowing and spot spraying along municipal roads, in hamlets, parks, cemeteries, waste transfer stations and gravel pits all assist in environmental practices.



3619 km's of roadside mowing completed.

143 Acres sprayed for weeds along

824 km of road Right of Way.





Agricultural Recycling

Grain Bag Rolling

The grain bag rolling program has been a great success! Since 2015, Wheatland County has had a grain bag rolling program in place. Agriculture and Environment department staff attend farms within Wheatland County to clean, roll and collect the plastic grain bags. The bags then go to a local recycler who processes the material into plastic pellets that can be re-purposed. Additionally, producers can drop bags off at our County's shop as we now have a grain bag collection site under the CleanFarms Alberta Ag Plastic Recycle It! program.

The Plastic Grain Bag Recycling Program had a very successful year in 2021 with 397 bags rolled for a total of 2360 hauled to the recycler since the program began in the fall of 2015 keeping over 485 tonnes of material out of our landfill.



Pesticide Chemical Container Program

At specific Wheatland County Waste Transfer Sites: Wheatland West, Standard, and Hussar, plastic pesticide containers are collected. In a partnership with CleanFarms, these sites were developed to collect and recycle the plastic. Containers will only be accepted if they are empty and have been triple-rinsed.



Twine Recycling

In partnership with the Drumheller and District Solid Waste Management Association, Wheatland County initiated a twine recycling program. Since 2015, twine collection bags have been available at waste transfer sites, where residents can return them to be recycled.



County Brand Running Bar G

Livestock branding is a technique used for marking livestock to identify the owner. According to a Smithsonian article, an ancient Egyptian tomb painting depicting a cattle roundup and branding from 2700 B.C. Cattle were introduced to the Americans by Spanish explorers, and the tradition of cattle branding came as well. The same practices were then taken up by the Americans and soon very well-known through the country. In Canada, Saskatchewan, Alberta, and British Columbia are the only provinces with cattle brand registries and associated brand inspection services.

A brand is a permanent mark applied to the hide of livestock for the purpose to establish ownership. The owner of a registered brand is offered protection by the livestock inspection services and the police against the loss of branded stock that may have strayed or has been harbored by someone else. Your brand protects you and your livestock.

Wheatland County owns Running Bar G on the left shoulder of cattle and the left shoulder of horses. This brand was originally registered in 1946 to the Municipal District of Serviceberry #43, Rockyford, Alberta because the municipality was an impound lot for stray livestock. It was then transferred to Municipal District of Wheatland #40, Strathmore, Alberta in 1955 and in 1961, the name changed to County of Wheatland #16.

The brands were purchased on January 1st, 1995 and as of 2021 our records have been updated to align with our name change to Wheatland County. The Running Bar G brand is unique in that it is the only registered G brand in the forward position. Current G brands are only issued in the reverse position to distinguish it from the letter C.





DROUGHT

A Dry Year

Drought is a continuous period of dry weather and when an area gets less rain than the normal amount over months or even years. Being a prolonged dry period in the natural climate cycle, it can occur anywhere in the world. It is a slow-onset disaster characterized by a lack of precipitation, resulting in a water shortage. Drought can have serious impacts on health, agriculture, economy and the natural environment. Wheatland County experienced dry summer months in 2021 which caused serious drought conditions. This drought reduced crop and pasture yields, caused crop failure and created a scarcity of water that impacted most, if not all, residents of the county.

During a drought some wetlands completely dry up and can stay dry for an extended period. Wetlands function like a sponge, releasing the water stored which helps delay the onset of a drought. Dry wetlands provide critical wildlife habitat, store flood water, and replenish ground water reserves, amongst other benefits. Some wetlands need to be dry for a part of the year to maintain their hydrologic cycle. Wetland substrates are very impervious and may be saline, which results in low crop productivity. When the wetlands become wet again, it will alter the previous development making the cost of seeding, draining, and cropping the wetland higher than the productivity of crop return.

Plan ahead!

- Drought planning begins when it is raining.
- Litter is our rain barrel. It acts as a blanket and a sponge moderating the soil temperature and slowing evaporation. To create litter, we need to leave some grass after grazing.
- Trigger and target dates are our calendar dates for destocking based on drought severity and objective measures. Choose which cattle go first, open cows, yearlings, culls, late calvers.
- What we feed and when we feed can make a huge difference in the end result
- Spring vs. Fall: Consider feeding longer in the spring to allow the grass to grow as much as possible. This can allow plants to build up their root capacity and to take advantage of late rains.
- Watch how your cattle are grazing. Monitor. Measure. Manage.
- RELAX! Enjoy the sunshine. By creating and sticking to a good plan the worst thing that will happen is you get rained out!

Do you have suggestions for how Wheatland County can assist you during a drought?

Contact Alyssa Barbero at
alyssa.barbero@wheatlandcounty.ca

Agriculture & Environment Programs & Services



Vegetation Management

- Mowing and spot spraying of County managed lands
- Seeding and reclamation of road construction Right-of-Ways and borrow areas.
- Chemical treatment of cut stumps for brush control in County right of ways



Weed Management

- Mowing and spot spraying along municipal roads, in hamlets, parks, cemeteries, waste transfer stations, and gravel pits.
- Public and private land inspections
- Education programs, identification



Pest Inspection & Control Program

- Staff conduct annual field inspections and surveys of: grasshoppers, Clubroot, Bertha Armyworms and Fusarium Graminearum
- Assistance with identification



Roadside Haying

- Permits
- Landowners wishing to hay Wheatland County's right-of-ways must submit an application to Wheatland County by June 30th.



Seed Cleaning Plants

- The ASB is responsible for annual inspection and licensing of three seed cleaning plants: Strathmore, Hussar, and Rosebud.



Agricultural Recycling

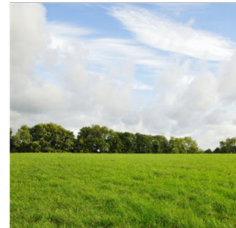
- Free grain bag rolling and hauling program
- Plastic baler twine recycling
- Farm chemical container drop-off sites (Hussar, Standard and Wheatland West facilities)



ASB Bursary

\$500—\$1500

- Available to Wheatland County students furthering their education in the field of agriculture or environmental science
- Application Deadline: August 31st



Shelterbelt & Ecobuffer Seedling Program

Wheatland County ratepayers are eligible for funding to purchase trees and shrubs, drip irrigation equipment, and mulch.



Environmental Program

- Promote environmental stewardship in the County, manage municipal Environmental Action Plans, and available to assist ratepayers with inquiries related to environmental management.
- Environmental Awards - nominations due: November 1st.



Agricultural Conservation

- Assist producers to complete their Environmental Farm Plan
- Assist Producers with Canada Agriculture Program grant applications
- Workshops and conferences



Funding Programs

- Safe Water Wells Action Program for abandoning wells & removing well pits (up to \$6000)
- Wheatland Agricultural Stewardship Program (up to \$5000)
- ALUS Wheatland program



Education Opportunities

- Workshops
- Tours
- Field days
- Pesticide Applicators license
- Classroom Agriculture Program

visit us at wheatlandcounty.ca/agriculture

Rental Equipment



Pasture Sprayer **\$150/Day**

The Boomless pasture sprayer can be utilized to control unwanted weed species and brush on rangeland pastures that are too rough for conventional spray equipment.



Weed Wiper **\$100/Day**

The 30-foot weed wiper can be utilized to selectively control unwanted weed species and brush in pasture and rangeland.



Skunk Traps **Free Rental**

Rental of a skunk trap requires a \$100 deposit and two week rental period.



Magpie Traps **Free Rental**

Rental of a magpie trap requires a \$100 deposit and two week rental period.



Forage Sampler **Free Rental**

Rental of the forage sampler requires a \$100 deposit and two week rental period.



Cattle Moving & Crossing Signs **Free Rental**

Available to producers when moving livestock across County roads.



Tree Sprayer **\$100/Day**

Only registered insecticides are to be used. Slides into the back of a pick up truck.



Tree Planter **\$50/Day**

Available for shelterbelt plantings, towable behind small tractor with 540 PTO shaft.



Grain Bag Roller **Free Service**

Wheatland County offers a free grain bag rolling service to ratepayers.

Contact Information

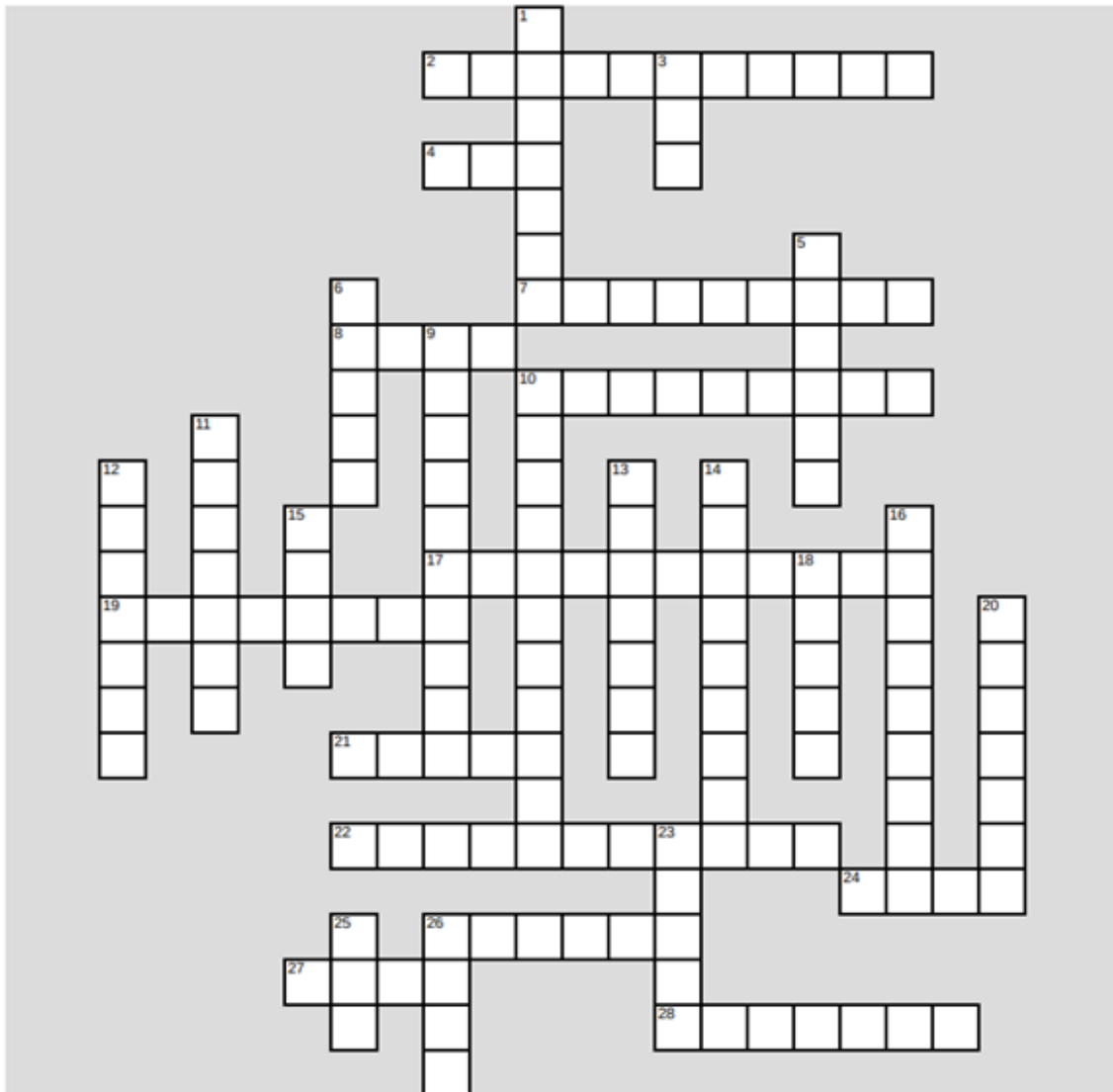
Administration Office Ph: 403-934-3321

ASB Shop Ph: 403-934-4949

Email: agandenv@wheatlandcounty.ca

Russel Muenchrath Manager of Agriculture & Environment	Ph: 403-361-2006
Jason Regehr Agricultural Services Foreman	Ph: 403-361-3238
George Bloom Agricultural Services Officer	Ph: 403-361-3240
Sheldon Roes Agricultural Services Sub-Foreman	Ph: 403-934-4949
Sarah Schumacher Agricultural Conservation Coordinator	Ph: 403-361-2027
Alyssa Barbero Agriculture & Environmental Program Coordinator	Ph: 403-361-2007
Gay Mowat Administrative Assistant	Ph: 403-361-2166

Agriculture & Environment Crossword



DOWN

1. The activity or business of growing crops and raising livestock
3. A feed source for ruminant animals
5. Large ruminant animals with cloven hoofs
6. The grain of which is ground to make flour, bread, pasta, etc
9. Applying controlled amounts of water to crops
10. The surroundings or conditions in which a person, animal, or plant lives or operates
11. Land covered with grass and other low plants suitable for grazing
12. A powerful motor vehicle with large rear wheels, used on farms for pulling equipment and trailers
13. Convert waste into reusable material
14. To fertilize a flower with fine yellow grains
15. Shelter for many farm animals
16. A substance used for destroying insects or other organisms harmful to cultivated plants or to animals
18. Where the milk is held in a female cow
20. Land consisting of marshes or swamps, areas where water covers the soil
23. Technique for marking livestock
25. Cow talk
26. Any type of cultivated plants that are grown as feed

ACROSS

2. Plant-eating insect with long hind legs that are used for jumping
4. A male sheep
7. A large open area of country covered with grass, especially used for grazing
8. Pellets of frozen rain that destroys standing crops
10. A biological community of interacting organisms and their physical environment
17. The science or practice of farming, including cultivation of the soil for the growing of crops
19. Canola root disease
21. A barrier, or upright structure, enclosing an area of ground to mark a boundary, control access, or prevent escape.
22. Line of trees or shrubs planted for protection
24. Plant growing where it is not wanted and in competition with cultivated plants
26. Yellow flowering plant that gets turned in an oil seed
27. A cow has these many stomach compartments
28. Continuous period of dry weather

CONTACT INFORMATION

Any comments or questions regarding the content of this Agriculture and Environment Program Update may be directed to:

Russel Muenchrath
Manager of Agriculture and Environment
Email: russel.muenchrath@wheatlandcounty.ca
Ph: 403-361-2006

You may also contact the main reception to be directed accordingly at Ph: 403-934-3321, or send an email to the department at agandenv@wheatlandcounty.ca.

Hard copies of this document are available at the Wheatland County Administration Office: 242006 Range Road 243, Wheatland County, AB T1P 2C4 (approximately 7 km east of Strathmore on the north side Highway 1).

The following documents are part of this series and may also be requested:

- 2017 Environmental Program Update
- 2018 Environmental Program Update
- 2019 Environmental Program Update
- 2020 Agriculture & Environment Department Report



AGRICULTURE & ENVIRONMENT